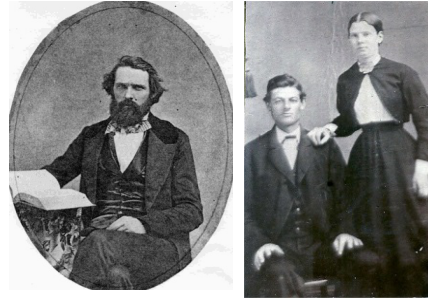


Biographies A - E

of All of the Surveyors and Individuals Associated with the Surveyor General's Office in Idaho 1866-1910



copyright 2023 by Jerry Olson

5/5/2024

Typical Format	Photo	Short Biography
<i>Born-Died</i>	(if available with permission to post)	(biography) means that there is a biography of some kind available in the Biography Section.
Political Affiliation, if known	Credits and sources for photos can be found in the Photo Section.	
Type of Surveyor		See the end of this section for a list of abbreviations.
First Contract or Engagement	Year	
to		
Last Contract or Engagement	Year	

Adair, Arthur Prentiss

1872-1964

Rep

USDMS

Mineral Survey 1906

to

Mineral Survey 1906



1898

ID PLS 77. Born in New York, Arthur began attending the University of Idaho in about 1892-94. His family had moved to Idaho by 1900, and Arthur was noted as being from Moscow. He was in the first graduating class, Class of 1896, with four graduates. All four were given positions at the University after graduation. Arthur was an instructor in civil engineering there in 1898, and at sometime was an assistant engineer for the B&OSWRR in Illinois.

In 1898 he enrolled in Cornell and received another degree in Civil Engineering in 1899. In 1901, Arthur left his position as assistant engineer for the B&OSW RR to become Assistant Professor of Civil Engineering in the College of Engineering at the University of Idaho. Arthur performed two Mineral Surveys in the Bodie and Carson Mining Districts in 1906. and from 1906-1910 he was associated with irrigation and power plant projects in Blackfoot, Mountain Home and Idaho Falls. Arthur was a civil engineer in Boise in 1910 and married Esther Louise Lamb, a Boise school teacher from New York, in New York in 1912. At that time, Arthur was associated with the Green River Canal in Wyoming.

Arthur was employed as a civil engineer for the U. S. Government in the Navy Yard at Charlestown, Massachusetts in 1918 and was a civil engineer in construction in Maryland in 1920 and the same in New York in 1923 and 1930. Arthur worked as a civil engineer for a RR in New York in 1940. The University of Idaho conferred on him an Honorary Doctorate Degree in Science during the 1946 Commencement. At age 83, Arthur was a consultant for the Savannah River Project. He died in New York in 1964 at age 92 and Esther died three months later.

**Adams, Wilbur
Edward
"Edward"**

1877-1910

USDMS

Mineral Surveys 1901

to

no more



ID PLS 30. Born in Iowa as an only child, Wilbur attended The University of Michigan from 1896-97 and graduated from the Colorado School of Mines in 1900. He was in Lewiston, Idaho from 1903-1910, but also in Denver in 1901, 1905 and 1906, all as a mining engineer, living with his mother and stepfather. He surveyed one Claim as a Deputy Mineral Surveyor near Elk City, Idaho in 1901. In 1903, he was surveying the townsite of Eureka, near Imnaha, Oregon, and was also locating a wagon road to a timber supply.

Wilbur surveyed 76 Mining Claims near the Snake River in Wallowa County in or near the Imnaha Mining District between 1902 and 1907. Wilbur made a topographic survey of the Post Office site at Lewiston in 1908, and by 1910 he was the engineer of an irrigation project of 40,000 acres in Southeast Kansas, with his residence listed as Lewiston. He was in Lewiston in the 1910 census, but he got a job at Ouray, Colorado that year, and died late in 1910 of pneumonia at Ouray. His funeral was at the home of his mother, and he shares a tombstone with William and Eva Gabbert at Fairmount Cemetery, Denver, Colorado. His stepfather was Chief Justice Gabbert of the Colorado Supreme Court.

**Alexander,
John Henry**

1842-1914

SES

Special Instructions 1909

to

no more



Born in Pennsylvania, John was a a clerk in a lumberyard in Iowa in 1870, a railroad contractor in Minnesota in 1880 and a jailor for the County in 1900. He had married British immigrant, Sarah B. Oldridge, in 1867, and they had three children, none of which were living at home in 1900. John was a named a Land Inspector for the LaGrande Land Office in Oregon in 1906 and was noted as furnishing material assistance to Chief Agent Dixon in his investigation of the Umatilla Land Frauds in 1907.

He was transferred to Portland in 1908 as a Special Agent covering both halves of the State. By 1909 John was a Special Agent for the General Land Office in Boise, not necessarily with the Surveyor General's Office. He had been recruited originally from Hennepin County, Minnesota. Sarah was in Washington, D. C. in 1910, living with a daughter and son-in-law, listed as a widow, even though John did not die until 1914. Regardless, they are buried side by side at Lakewood Cemetery, Minneapolis, Minnesota

Alley, William G.
 1862-1950
 USDS
 Contract 165 1895
 to
 Contract 254 (with 1904
 David B.
 Wickersham)

ID PLS. Born in West Virginia, William's family moved to Minnesota by 1865, and he attended high school there, even though his mother died when he was 13. He was in Idaho by 1895 to receive Contract 165 for 18 townships scattered around the state. Contracts 176 and 184 followed with surveys East of Weiser for 9 townships. He used future USDS Gordon Smith as a crewman for portions of those surveys. Contract 192 followed with 9 townships in the upper Weiser River with Gordon Smith and Jay Turley as crewmen.. Joint Contract 199 with Jay Turley in 1899 for 23 townships North of Idaho Falls was surveyed with George Fenley as a crewman.

William was a civil engineer, single and a roomer in Boise in both the 1900 and 1910 censuses, but was widowed in 1920 in Texas. He lived in Odessa, Texas in 1935 and 1940 as a widower, and died there in 1950.

Almond, Frank William "Frank"
 1853-1926
 Rep
 USDMS
 Mineral Survey 1904
 to
 Mineral Survey 1904

ID PLS 46. Born in England, Frank was in Colorado by 1885, was a Clerk in a Lawyer's Office in Denver in 1900, and came to Boise about 1901. He married his wife Julia Uphill Jaeger in 1882, who was born in England, and they had at least one child in England. He came to the U. S. in 1885 and was naturalized by 1900. Frank surveyed Mineral Survey 1958 of two Mining Claims in Bear Creek Mining District in Idaho in 1904 and Mineral Survey 2056 of one Mining Claim in Boise County in 1905. He was Ada County Surveyor in at least 1909, a civil engineer in general practice in Boise in 1910 and ran for Ada County Surveyor against George Ball and Albinus Kimmell in late 1910.

He built the first concrete bridge in Idaho, and also was the first to use concrete abutments. Frank was instrumental in the Good Roads Organization and was named the "father of the good roads law adopted by the Legislature". He was the City Engineer of Boise in 1920 and died there in 1926.

**Anderson,
Andrew Smith**

1858-1929

USDS

Contract 308 (with 1909
Olef E. Peterson)

to

Contract 333 1910



Idaho PLS. Born in Utah, Andrew married Emily Cordelia Poole in Salt Lake City in 1884 and lived in Menan, Idaho from at least 1900-1920. He received a Joint Contract with Olef E. Peterson in 1909 for 6 townships in far Southeastern Idaho and they both signed the oaths. Emily died in 1915, and Andrew received a Passport to go to Mexico to survey mining properties and a branch RR. He died in Texas, but is buried with Emily in Rexburg Cemetery, Rexburg, Idaho.

**Anderson,
Burton J.**

1884-1971

Dr/Clerk

Clerk 1907

to

no more



Born in New Jersey the son of a glass blower, Burton moved to Pennsylvania after 1894 with his family. He lived in Idaho by 1906 when he was noted as a draftsman in the Surveyor General's Office in Boise, lasting until 1909. The City Directories noted him as a draftsman for the J. L. Savage Company in Boise until at least 1912. Burton obtained a job with the Corps of Engineers as a Field Clerk in England and France in 1917 and applied for a Passport.

**Anderson,
Edward S.**

1875-1953

USDMS

Mineral Survey 1907
to

Mineral Survey 1909

ID PLS 103. Born in New Hampshire, the son of a Scottish Immigrant dry goods dealer, Edward graduated from high school. He was a draftsman for a RR in Pennsylvania in 1900 and a civil engineer for a abstract company in 1910 in Pocatello, Idaho. He was licensed as an Idaho PLS in 1903, and in 1905 Edward formed the Bannock Engineering Company with U S. Deputy Mineral Surveyor, William Havenor. Edward began surveying Mining Claims in Blaine County, Idaho from 1907-1909 with seven Mineral Surveys containing 11 Claims. That continued in 1912 with surveys for 12 Mining Claims near Pocatello and three Mineral Surveys in Bear Lake County in 1913. With Havenor as City Engineer for Pocatello and Edward as Consulting Engineer, they designed a new addition to the Pocatello Water system in 1914.

Edward was a civil engineer in Pocatello in 1920, and his last Mineral Survey was in Butte County in 1922. From 1920-1940 at least, Jesse Stewart, a older cousin living with the family in 1880, was living with Edward. He was a civil engineer in Los Angeles in 1930 and working in a warehouse in New Hampshire in 1940. He married for the first time in 1951 at age 76 to 67-year-old Ethel I. Sprague in Idaho, just two years before he died.

**Anderson,
Frank**

1868-1927

USDMS

Mineral Survey 1909
to

Mineral Survey 1909



c. 1895

Born in Utah, the son of a doctor, Frank graduated from the University of Michigan. He returned to Salt Lake City, opened up a practice in Mining Engineering, and married Elizabeth Williamson in Salt Lake City in 1907. Frank surveyed two Mineral Surveys in Southeastern Idaho in Bear Lake County in 1909.

He continued his practice with a high reputation until he died of a stomach ulcer quickly in 1927. There were three engineers named Frank Anderson in Idaho and Utah of the right age to be the candidate , but only one of them matched the signatures on the Mineral Surveys.

**Anderson,
General Scott
"Scott"**

1851-1924

UDDMS

Mineral Surveys 1888

to

Mineral Survey 1904



Born the son of a farmer, Scott married Rose E. Potter in Colorado in 1880, and a year later son Irving was born in Colorado.. Scott was an active Mineral Surveyor in 1891, living in Wallace, Idaho, and lived in Murray, Idaho in 1901. He was listed in the 1900 Census at Wallace, Idaho with his family, including son Irving Anderson, who was at school. Scott performed 82 Mineral Surveys in Idaho between 1888 and 1904, mostly in Shoshone County.

Scott became a Director of the Bank of Commerce in Wallace in 1901, and continued until it was suspended and closed in 1910. The reasons given by the auditor were: "excessive and dishonest financing of the personal enterprises of B.F. O'Neil, President and G. Scott Anderson, Director, aided and abetted by E.S. Wyman, Cashier," and also "the abstraction of funds for the private use of B.F. O'Neil." B. F O'Neil had just finished an unsuccessful campaign for Governor. and "his indebtedness comprised 70% of the bank's total loans". Also, Scott was noted as having been a Director of Lane Lumber Company. Both B. F. O'Neil and Scott Anderson were indicted in 1912 for submitting false reports.

By 1910 Scott had retired from surveying, and was the manager of a Hardware store, still in Wallace. That grew into Anderson and Son, Hardware and Lumber in 1916 with Irving participating. Scott was listed as the owner of a Lumber Co. in 1920. Rose died in 1921 and Scott in 1924, both in Wallace.

**Anderson,
Irving**

1881-1961

USDMS

USDS

Mineral Surveys 1904

to

Mineral Surveys 1909

Born in Colorado, the son of G. Scott Anderson, Irving attended college for four years. He was in Wallace, Idaho with his family in 1900, listed as being at school. Irving married Katherine Negley Hare in 1906 in Shoshone County, Idaho. Scott was named in the 1916 Directory of Wallace a partner in G. S. Anderson and son, in the lumber and hardware business. Irving was a Mineral Surveyor and Mining Engineer in Wallace, Idaho from 1900 to at least 1939. From 1905-1939, Irving surveyed 43 Mineral Surveys, all of which were in Shoshone County, except for one in Custer County in 1929. He died in Wallace in 1961, and Katherine survived him one year.

**Anderson,
James Henry**

1857-1934

Rep

SES

Special Instructions 1909

to

no more



Born in Utah, Henry attended Deseret University 1869-70 before moving to the printing industry. He eventually started his own business, and ended up the City Editor of the Deseret News. He married Mary Ann Abbott in Salt Lake in 1881, and they had five children. Henry completed his Mission to Europe in 1892 after spending time in Britain and France. He helped write the History of Utah until going back to the Deseret New in 1901.

Henry was elected a Salt Lake County Commissioner in 1900 and served as Chairman of the Board until he retired sometime before 1906. Mary died in 1903, and Henry remarried to Elsie S. Schneider in 1904. they had two adopted twins in 1906. He was State Chairman of the Idaho Republican Party in 1902 and accompanied newly elected Senator Smoot to Washington D. C. to assist in the transition and attended his swearing in ceremony. Henry was named Chief Deputy U. S. Revenue Collector of the States of Montana, Utah and Idaho in 1906, continuing until 1909. Henry was listed in the 1909 Register as a Special Agent for the General Land Office in Idaho, residing in Boise. This may have been with the Boise Land Office rather than the Surveyor General's Office.

Henry was named the U. S Marshal in Idaho in 1909-14 by President Taft. President Harding appointed Henry to the position of United States Custom Collector for Utah, and he held that position until shortly before his death in 1934 at Salt Lake. He was active all his life in the Mormon Church and Utah civic activities.

**Anderson, Neil
Alexander**

1872-1941

USDMS

Mineral Surveys 1909

to

no more



ID PLS 199. Born in Utah, the son of a Swedish Immigrant, Neil was still a student in 1900 and graduated from Colorado School of Mines in 1902. He was a surveyor in Frisco, Utah in 1908, married his wife Nettie Firth in 1908, and they had 7 children. Neil surveyed 20 Mining Claims in Idaho in 1909 and by 1920-30 was an alfalfa farmer at Thornton, Idaho.

The newspapers noted him going off to do surveying on occasion. He was on the Board of the Independent Canal Co. in 1928, a group representing the various canal companies in Idaho. Neil was also elected Madison County Surveyor at least in 1918 and 1930. He lived on the farm at Thornton until he died in 1941.

**Anderson,
Samuel**

1839-1881

Astr

Special Inatructions 1859

to

no more



Born in London, England, Samuel graduated from the Royal Military Academy in 1857 and was named a Lieutenant in 1858. He took a crash course on astronomy after he was appointed to the British Staff of the Northwest Boundary Commission in 1859 as Assistant Astronomer for the survey of the North Line of Washington, Idaho and Montana.

His first assignment was to resurvey the North line of Washington across the Cascades surveyed in error by his predecessor. He returned to England in 1862, where he worked on the maps and reports of the Commission until 1864. Samuel created a map of Western Palestine in 1865 and then worked in the Royal School of Military Engineering until he was appointed Chief Astronomer for the Northern Boundary Commission to survey the North line of Montana , North Dakota, and Minnesota in 1872. He completed the work in 1874, worked in Ottawa in until 1875, and then returned to England. Samuel joined the War Office as an assistant inspector of submarine defences, becoming a Major in 1879. He died at his mother's house at age 42 in Scotland in 1881 and is the Namesake of Anderson Peak in Southern Alberta, Canada.

Angell, Homer

D.

1875-1968

Rep

Contract 247 (with 1904
Clyde W. Riddell)

to

no more



1909

Homer was a short man, but played football for the U. of Oregon and Columbia University. He was born in Oregon and received his early education in the Wasco Independent Academy in The Dalles, Oregon. He graduated from the University of Oregon in 1900, and besides football, he was captain of the track team and the school's debate competitor. Homer worked as an axeman and chainman for William E. Campbell on four Contracts from 1891-99, and on one Contract for Ed Sharp in

Homer was a short man, but played football for the U. of Oregon and Columbia University. He was born in Oregon and received his early education in the Wasco Independent Academy in The Dalles, Oregon. He graduated from the University of Oregon in 1900, and besides football, he was captain of the track team and the school's debate competitor. Homer worked as an axeman and chainman for William E. Campbell on four Contracts from 1891-99, and on one Contract for Ed Sharp in 1895.

He became a U. S. Deputy Surveyor just after receiving his degree from the University of Oregon. He received Contract 720 for one township East of Cave Junction, Oregon in 1900 and used classmate, and future Deputy surveyor, George R. Campbell, as a chainman. Also in 1900, he received Contracts 725 and 726 for two townships East of John Day. His last Contract in Oregon was for three townships, two east of Roseburg, and one North of Goose Lake in 1902. The work was examined and suspended, but later accepted. He had graduated from Columbia Law School in 1901, and performed Contracts in Idaho and Washington in 1904 and 1905.

Four were Joint Contracts with Clyde W. Riddell, who was a childhood schoolmate and played football at the University of Oregon with Homer. Robert Omeg, another schoolmate, was a chainman on several townships and Contracts, and they held a Joint Contract in 1904 in Oregon. Homer was a U. S. Transitman under Group 5 with the Direct System in the summer of 1910. Homer practiced law the rest of his career and became a Republican Oregon State Representative from 1929-1936, Oregon State Senator in 1937, and U. S. Congressman from Oregon from 1938-1954, losing a primary to Tom McCall. Growing up near The Dalles, OR, he was a neighbor and uncle of U. S. Deputy Surveyors, W. A. B., Charles L., George R. and Roy T. Campbell. (biography) This is the maintained information.

**Armstrong,
James Curtis
"Curtis"**

1873-1959

Dr/Clerk

Clerk

to

no more

1906

Born in Iowa, James married Annie Petrie Blair in Iowa in 1900, after he had served in the Spanish American War and was noted as a bookkeeper. James had a son in Idaho and arrived in Boise by 1903 when his daughter was born. He worked as a draftsman in the Surveyor General's Office in 1906 and 1907. James purchased a Timber Claim of 80 acres in 1907 near Moscow. Annie died in 1917, and James remarried to Jean Paul Roberts in 1919, producing two children by that marriage. He was a draftsman for the government in 1918, for a surveyor in 1920, for the Attorney General in 1930 and for the General Land Office in 1940. His death certificate listed him as a map maker.

**Ashley, John
Kossuth Sr.**

1853-1926

Rep

Contract 298 1908

to

Contract 299 1908



Idaho PLS L-208. Born in Ohio of a surveyor, John moved to Colorado with his family in 1858 and worked as a messenger in the Surveyor General's Office at age 12-14, where his uncle Eli was Chief Clerk. He later graduated from college in Antioch, Ohio in 1876. He went back to Denver to rejoin his family, where he worked as a civil engineer and Arapahoe County Surveyor until 1888, when he

John received several Contracts in Colorado from 1879-1881, and was a partner in Ashley, Lambert and Clarke in Denver in 1882. John was Arapahoe County Surveyor from 1881-83, and was nominated for Denver City Surveyor but lost by a wide margin. John owned race horses in 1884-85 in Colorado, and was sued for a debt by the Colorado National Bank not long after one of his best horses died. John was a strong Republican and helped many candidates including Teller for Senator. John was elected to the State Legislature in 1884, and was elected Speaker of the House at the start of the session in 1885. His father, William H. Ashley, was a Colorado GLO Surveyor from 1861-1880, and his uncle James M. Ashley was a U. S. Congressman from Ohio for ten years and then was appointed Montana Governor in 1869.

A. W. Barber associated Eli Ashley, John's brother, with the Benson Syndicate in Colorado in 1885, and Harry A. Clarke, John Ashley's partner both in Denver and Spokane, was a lawyer for the Benson Syndicate surveyors in Washington. Barber refers to "the Ashleys" when talking about the corruption. Eli, the uncle, was Chief Clerk in the Colorado GLO Office from at least 1865-1880, and John was a U. S. Deputy Surveyor from 1879-1881. The 1885 Report of the Commissioner refers to the "Colorado Ring" in Washington, namely Harry Clarke, George Gardiner, Wencel Plachy, and John Ashley. John moved to Spokane by 1891, and was City Engineer of Spokane, and then County Surveyor of Spokane County from 1892-1893.

He served as Compassman for Harry Clarke on his Contract on the Yakima Reservation in 1885, and he was partners with Clarke in Spokane as Ashley and Clarke from 1887-91. At about this time it was proven that Harry Clarke paid a \$500 bribe to a State Senator for a vote on a U. S. Senator.

John was awarded Contract 363 to survey the Ruby Guide Meridian and several townships in 1891. Ed Hooker and Irving Worthington were chainmen on this survey. He made a 35 chain error at Palmer Lake on the Ruby Guide Meridian, which was not disclosed until the fractional survey of T39N R25E by Dekalb Ashley was submitted and inspected. Dekalb did not disclose the error, but it came to light through an examination of his contract by Henry Newby. The Ruby Guide Meridian through T39-40N of John Ashley was not approved, the entire survey of Dekalb Ashley was rejected, and all were resurveyed by Stixrud and Nasten in 1896.

John returned to Denver by 1901, and then in 1902, John moved to Sand Point, Idaho to join his father and brothers, Eli and William, where he worked as a civil engineer until at least 1920. He received Idaho Contract 298 in 1908 for seven townships Northeast of Coeur d'Alene on the Montana border. He was appointed to both the Engineering and Surveying Licensing Boards in 1903 by the Governor. John surveyed "Colburn" in 1902 and completed a map of Sandpoint in 1904. He died in Sandpoint, Idaho. (biography)

Ashley, John

Kossuth Jr.

1884-1932

USDS

Contract 299

1908

to

Contract 309

1909

Idaho PLS 66. Born in Colorado, the son of U. S. Deputy Surveyor John K. Ashley, Sr., John was living with his family in Spokane in 1900. He received Contract 299 for four townships Northeast of Coeur d'Alene in 1908 with the assistance of his father. Coincidentally, there were two sets of final oaths for two sets of field crews on all the townships, indicating that his father was probably a compassman. John began surveying Mineral Surveys in 1908 and surveyed 17 of them before 1911 and 14 more from 1911-20, all in Bonner County.

He married Marie Reine Cheveer in Sand Point in 1909, and after one son, they were divorced by 1918. He received Contract 309 in 1909 for one township with five miles of line next to his previous survey and used his father as the flagman. In 1910, John was a surveyor for the County in Sandpoint, Idaho, and was noted as the first County Engineer of Kootenai County.

John made a Segregation Survey of a Millsite in 1915 as a Cadastral Engineer under the Direct System. John attempted to join the Army Engineers in 1918, but was disqualified because of a hernia. He had it repaired and tried again with unknown results. He lived in a hotel in 1918 and was noted as a divorced mining engineer in Spokane in 1920. He remarried in California to Spanish Speaking Victoria Mangiardini, and in 1930 was living with his bride and her mother in San Anselmo. John died in San Rafael in 1932 of an infection from a foot injury, and is interred there.

**Ashley,
William Henry
Jr. "Billy"**

1867-1951

Dem

Rep

USDS

USDMS

Mineral Surveys 1898

to

Mineral Surveys 1906

ID PLS 17. William was born in Colorado as the younger brother of Eli M. and John K. Ashley, and the cousin of Dekalb Ashley. He came to Idaho with his parents in 1886 and stayed the rest of his life. He married Grace in 1895 in Kootenai, ID. William received one small Contract that involved the retracement of the State Line and some subdivisions near Mud Lake, Idaho in 1899. From 1888 to 1902, he was Kootenai County Surveyor, and from 1906-14 and 1921-34, he was the Registrar at the Land Office in Coeur d' Alene. William surveyed 12 Mineral Surveys in Northern Idaho from 1898-1906. The governor appointed him to lead an examination of a recently completed wagon road in 1895, which was determined to be greatly out of specifications.

William served two terms in the State Legislature beginning in 1902, and was the author of the bill requiring land surveyor licensing. Starting in 1934, he then spent the last 18 years of his life back as Kootenai County Surveyor.

**Austin, Edwin
Nelson**

1840-1920

USDS

Contract 102 1883

to

no more



Born in Connecticut, Edwin came to California with his family for the gold rush in 1846 and was mining in the diggings at age 8. They were Mormons, and moved to Utah to be with the church there in 1848. Edwin married Alnora Naomi Lane in Utah in 1863, and they were in Liberty, Idaho by 1866, where he was active in the church. He added to his household in 1872 by Marrying Emma Wood, Alnora's

He had 11 children by Alnora and 10 children by Emma. The last one was born in 1894, when he was 54 and Emma was 41. He was the first Sheriff of Bear Lake County, and was County Surveyor for several terms. Edwin was a U. S. Deputy Surveyor and a U. S. Deputy Mineral Surveyor in Idaho. He was the LDS Bishop of Bear Lake County from at least 1885-1893.

**Austin,
Thomas
Cloakes**

1852-1923

USDMS

Mineral Survey 1907

to

no more

Thomas was born in Ohio, the son of an English immigrant shoemaker, and was studying law at age 19 in Ohio, where his family was living. He came to Whatcom, Washington in 1883 with his family. He was a practicing civil engineer and surveyor in 1883, and later in the year he was elected as the City Surveyor for the new town of New Whatcom. He surveyed the town of Wesly and three others. He surveyed a town plat with his brother Banning in 1884. Thomas was an attorney in Whatcom in 1885 and lost for the office of Whatcom Prosecuting Attorney in 1886 as a Democrat. He was a deputy county surveyor in 1887 for his brother, County Surveyor Banning Austin.

He married Louise Grenier in 1888 and continued in New Whatcom until at least 1902. Thomas was in Spokane by 1907 when he was appointed a United States Deputy Mineral Surveyor, destined to go to the Metaline District. He was the Chief Engineer for a RR in 1907 from Spokane to Davenport. Thomas was reported in Wallace, Idaho in 1910, and died in Seattle in 1923.

**Babbitt,
Thomas
Darling**

1859-1939

USDMS

Mineral Survey 1895

to

Mineral Surveys 1901

Born in Ohio, the son of a physician, Thomas Began surveying Mining Claims in Owyhee County, Idaho in 1895, and performed 14 Mineral Surveys in Carson Mining District by 1897. Thomas was a civil engineer in Boise in 1900 and was in Nampa by 1903. He was bonded as a USDMS in Idaho in 1901, and was listed as a mining engineer in Nampa in 1930. There is no record of him doing a Mineral Survey after 1897. The Governor appointed him as a delegate to the American Mining Congress in 1904. He died in Nampa in 1939, and it appears that he never married.

Thomas spent the better part of his career in Idaho managing mines, based out of Nampa. He was living in at least: Emmert in 1901, War Eagle in 1901, Weiser in 1902, Silver City in 1914-19, and in Owyhee in 1917, .

**Bacon, George
Morgan
"Morgan"**

1872-1952

USDMS

Mineral Surveys 1911+
to
no more



Member ASCE. Born in Massachusetts, Morgan grew I up in New York and graduated from Cornell University in Civil Engineer in in 1893. He was an engineer for the Boston subway system and married Isabel Dame in 1898, and they raised five daughters in Salt Lake City, Utah. Morgan worked on various projects in Utah and neighboring states as an engineer, overseeing the construction of dams, tunnels, canals, pipe lines, mines, power plants and other projects.

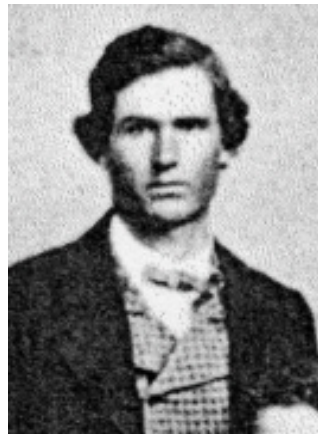
He was a Member of the American Society of Civil Engineers and worked as a U. S. Deputy Mineral Surveyor in Utah, Idaho, and Nevada. He became State Engineer for Utah from 1923-32. He published a volume of poetry and died in Salt Lake in 1952. His daughter, Isabel, married Philip La Follette who would become a two term Governor of Wisconsin in the 1930's.

**Baker, Darius
Fred**

1842-1927

USDS

Contract 18 1870
to
Contract 107 1884



Born in New York, Darius lived in Boise from 1867-1927. After serving in the Civil War for four years, he crossed the Oregon Trail to Boise in 1865. In 1870 he was living in the house of Surveyor General, Lafayette Cartee, where his sister was keeping house as the sister-in-law of Lafayette Cartee. This would also make Darius Baker a relative of Cartee. Also living in the house were Peter Bell and Allan

Darius was a chainman on the first Contracts of Peter Bell beginning in 1867. He received Contract 128 in 1870 from Cartee for 8 townships and surveyed the exteriors only for six of them. Two more Contracts were awarded to him in 1883 and 1884 for 18 townships, and he surveyed about half of them, using fairly consistent small crews. He was an assistant surveyor, government storekeeper and guager, and County Treasurer from 1875-1885. He was then appointed Court Crier in the Federal Court, which he held for 40 years.

**Baker, Henry
Franklin**

1835-1919

Dr/Clerk

Clerk

to

no more

1883

Born in Kentucky, Henry F. Baker was a draftsman in the Idaho Surveyor General's Office from at least June, 1883 to June, 1885. No individual yet can be identified for sure as that Henry Baker. One candidate was a teacher and principal near Hailey, Idaho from 1886-1901. He had been a principal in Nevada since 1880. Another candidate was born in Iowa, was a printer for the Statesman in Boise from 1880-1882, and moved to Hailey at that time to continue as a printer. There was an H F. Baker, advertising as a consulting mining engineer in Boise in 1883, details unknown. Also an H. F. Baker was advertising in Boise as a mining engineer out of San Francisco in 1880. The last two engineers are the same person, and this biography is based on that choice.

Henry was born in Kentucky in about 1835. He showed up in Stockton, California in 1875 as a Clerk, and was an engineer in San Francisco in 1880. About that time Henry formed a partnership with James H. Crossman as Mining Brokers, advertising at least in Boise. Henry was listed as a C. E. and Mining Engineer, and the group claimed worldwide influence and abilities. Henry was advertising his own consulting business in mining in Boise in 1883. The partnership apparently fell apart, and Crossman teamed with a new partner. Crossman probably suffered losses in the Panic of 1893 and committed suicide in San Francisco in 1894.

Henry apparently dabbled in mining properties while in Idaho, and was a civil engineer in Salt Lake City in 1900. He was in Santa Clara, California in 1910, living on his own income, and died in Santa Clara in 1919. His Find a Grave website gives him the title of "Colonel" for unknown reasons".

**Baker, Marie
L. Mrs.**

1848-1925

Dr/Clerk

Clerk

1883

to

no more

Listed as born in New York in the 1883 Register, Marie L. Baker was probably the wife of Henry F. Baker. His wife was listed as Mary Baker from New York in San Francisco in 1880, M. L. Baker from New York in Salt Lake City in 1900, and Mary L. Baker from New York in Santa Clara, California in 1910. She was noted in the Register of 1883 as a Clerk, but not in 1885, and her term as a Clerk was approximately concurrent with that of Henry. Henry and Mary were in Boise from at least 1882-1886. They were in Salt Lake City in 1900 and Santa Clara, California in 1910. She died in Santa Clara in 1925, listed as Marie L. Baker, the husband of Henry F.

**Baker, Thomas
T.**

1840-1906

USDMS

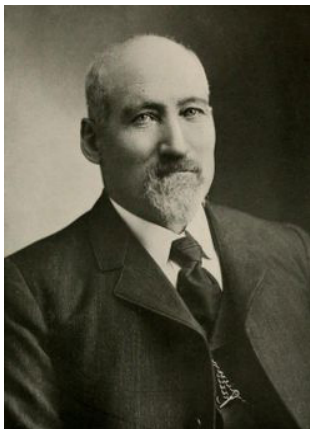
Mineral Surveys

1901

to

Mineral Surveys

1905



Member AIME. Born in West Virginia, Thomas enlisted in the Civil War at a young age and came out as a Second Lieutenant. He graduated from Iowa College in 1874 and taught school at the institution for two years. He came to Virginia City, Montana in 1875 and taught school there for two years. In 1877, he moved to Butte and opened a practice in surveying and civil engineering, serving one term as Silver Butte County Surveyor. He continued surveying there until he died in 1906. He was noted as a giant of a man, over six feet, built like an athlete

**Balcom,
William A.**

1860-1931

USDMS

Mineral Surveys 1887

to

no more

Born in Illinois the nephew of the chief engineer of the Illinois Central RR, William was attending Illinois Industrial University in 1877. By 1880, he was working in the office of a railroad in Illinois, living with his mother and siblings, William briefly moved to Crested Butte, Colorado in 1881 and formed a partnership in surveying and engineering with W. H Graves. They were also officers of a Trust Company. He lived in Flint, Idaho in 1887 when he was bonded as a USDMS in Idaho.

William was a civil engineer with the Denver and Rio Grande RR in 1888 when he married Edna J. Wildman in Indiana. She died in 1893. In 1900 he was a Division Engineer of the Denver and Rio Grande RR, living with his mother and sister in Denver. He was still with the RR in Pueblo, Colorado in 1910, living with his spinster sister. Continuing as a civil engineer with the RR, he was in Pueblo, Colorado in 1920 and 1930, living with two sisters. He never remarried, and died in Pueblo in 1931. Edna's remains had been moved to Roselawn Cemetery in Pueblo to be beside William.

**Baldwin,
Layton Samuel**

1837-1906

USDMS

Mineral Surveys 1902

to

Mineral Surveys 1906

Idaho PLS No. 12. Layton was born in New York, and served as a Captain in the 10th New York Calvary. He was dishonorably discharged in 1863 after he was found to have rendered fraudulent accounts as adjutant. Layton married Helen Sturdevant Snyder in New York in about 1862, and they had 8 children, After the war, he was engaged in civil and mining engineering in the coal fields of Pennsylvania before coming West. He was a coal operator in Mahanoy City, Pennsylvania in 1880 with the younger children From 1889-1901, Layton surveyed 180 Mining Claims and one Contract out of Ruby in Okanogan County. Baldwin was listed as an attorney in Ruby, WA, in about 1890 and won at least one election for County Surveyor at that time. He qualified for an Invalid Pension in 1891 at age 54.

Layton was rooming with his son, Irwin in Okanlogan in 1900. He had a placer claim above Conconully with others, but moved to Boise in 1902 where he worked as a Civil and Mining Engineer in partnership with his son. His wife was living in Wyoming in 1900 with her sister and only Layton and Irwin were in Boise. He surveyed 13 Mining Claims in Grant and Malheur Counties in Oregon in 1903 and 53 Mining Claims in Idaho out of Bloise in 1902-06. USDS Arthur B. Clark and his son, Chester were crewmen for several of the surveys. Layton died in 1906 of a heart attack while surveying a Claim at Idaho City. Post to WA and OR.

Baldwin, Leighton Irvin "Irvin"		ID PLS 110. Born in New York, the son of Layton S. Baldwin, Irvin was living with his mother and grandparents in Castile, Wyoming in 1880. He was listed as a mining engineer with his father in Okanogan County, Washington in 1900, where he had at least one Mining Claim near Conconully. Irvin was the engineering partner of his father in Boise in 1906 in the year when his father died and when he married Mae Moss Richardson. From 1910-16 he performed 13 Mineral Surveys near and Northeast of Boise and served as Boise City Engineer for several years. He was an unemployed civil engineer in Boise in 1920 with his wife and son.
1863-1925		
USDMS		
Mineral Survey	1906	
to		
Mineral Surveys	1909	

Irvin moved to Salt Lake City in 1922 to work as a mining engineer, and died in Portland, Oregon on a business trip in 1925. His wife Mae remarried and died in 1937, but was not interred for 67 years. Her ashes had been in the basement of a funeral home for that time, but is now interred in Pioneer Cemetery near Irwin and her parents.

Baldy, Milton Lightner		Born in Pennsylvania, Milton was with his family in St. Paul, Minn. from at least 1885-1895, working as a clerk, and he married Sarah Irene Talman there in 1900. He worked in South Dakota in 1900 as a surveyor, and then was Spokane County Surveyor from 1907-1908. He surveyed 12 Mining Claims in Washington near Enterprise Valley in 1907. Also in 1907-08, Milton surveyed 9 Mining Claims in the Idaho Panhandle. As an engineer from Spokane, he surveyed a RR up the White Salmon River in 1909, and was in Portland in 1910 in private practice.
1866-1916		
USDMS		
Mineral Surveys	1907	
to		
Mineral Survey	1908	

Between 1910 and 1914, Milton and Sarah were divorced, after having no children, and Sarah remarried. Milton was indicted in Multnomah County, Oregon in 1911 for writing a bad check. He was the surveyor of a rural subdivision in Douglas County, Oregon in 1911, and died in Los Angeles in 1916.

**Ball, George
W.**

1850-1919

SES

USDMS

Special Instructions 1892

to

Mineral Surveys 1900



Idaho PLS 6. Born in Connecticut, George was educated in civil engineering in Colorado. He first worked in Pueblo, Colorado on the sewer system, sidewalks, and a viaduct, before coming to Boise in 1888. He was elected Ada County Surveyor at Boise in 1893. Beginning in 1892, he was a Special Examiner of Surveys in Idaho, continuing in that for five examinations through 1893, in addition to ten examinations in 1898 and two in Oregon in 1898.

**Ballard,
Charles Henry
"Charlie"**

1857-1934

USDMS

Mineral Surveys 1891

to

Special Instructions 1898



Charles was born in Roseburg, OR as the younger half-brother of William R. Ballard. The family moved to Auburn, WA by 1870, from which both he and William studied civil engineering at the University of Washington. He went first to Butte, Montana, and then to the Okanogan in 1886. While a probate judge, he surveyed the townsite of Chelan in 1886, and then Loup Loup City and Swansea in 1892. He created a great map of all the mines along Salmon River in 1888, and at some time near 1890 was Okanogan County Surveyor.

In 1895 he surveyed and built a road over Harts Pass from the Methow River to the Slate Creek Mining District. Ballard was the engineer of the Palmer Mtn. tunnel in 1896. Between 1888 and 1910, he surveyed 68 mining claims, mostly in Okanogan County, and in 1898 went to the International Mining Congress in Salt Lake City. From 1910-11 he was in Seattle, surveying plats and in 1914 was a mineral surveyor in Alaska. He was the principle owner of the Azurite Mine in the Slate Creek District and hauled gold out of it from at least 1930-1934. He and Anna were living in Twisp in 1920 and 1930, and he died in Wenatchee. Charles was the namesake of Mount Ballard in the Slate Creek Mining District and the namesake of the Ballard Campground on the Methow River on the road to Harts Pass. (biography)

**Ballard,
Samuel Milroy
"Roy"**

1881-1942

USDS

HES

Special Instructions 1910

to

no more

Idaho PLS. Born in Indiana, Samuel attended the University of Indiana from 1900-1901. He married a teacher, Ruth Hannah Paull, in Wisconsin in 1907, and they had one son that was born 10 years after their marriage. Samuel lived in Challis, Idaho in 1910 as a surveyor and showed up in the census of Utah in the same year in Salt Lake, also as a mining engineer. Samuel lived the rest of his life in Boise as a mining engineer with Ruth and their son. He surveyed 5 Homestead Entry Surveys from 1910-13 and 5 Mineral surveys from 1911-1915 in the Direct System, all in Idaho. He died in Boise in 1942. Ruth was a Case Worker for the State Department of Public Assistance.

Along the way, he worked as a machinist for the Rogers Locomotive Company and in 1856 went to Chili for three years for the Southern Railroad. James returned from Chili and bought a mine first in North Carolina and then Colorado. In 1861, James sold all his property and joined the New York Regiment of Engineers, working up in rank from Corporal to Captain.. His last assignment was on the staff of General Gilmore, and he mustered out in 1864. . He was wounded several times, the last time breaking a hip at Fort Johnson, South Carolina.

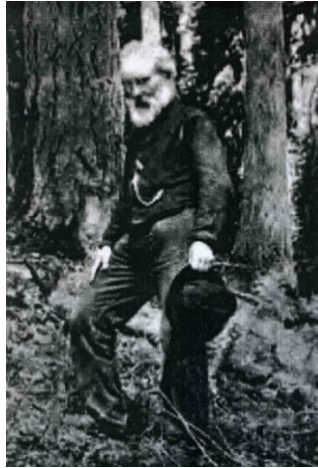
**Barber,
Amherst
Willoughby**

1841-1920

SES

Special Instructions 1896

to
no more



Born in Vermont, Amherst was nominated for West Point twice, but not selected. His older brother, Augustus, was a U. S. Deputy Surveyor in Wisconsin, and another older brother, Joel Allen, was in the Wisconsin State Legislature. Augustus also had interests in copper mines and drowned in the Montreal River in 1856. Amherst ended up in Wisconsin, and enlisted in the Wisconsin Infantry, serving for the duration of the War.

After the war, Amherst studied law, worked as a U. S. Deputy Surveyor, owned a newspaper in Yankton, Dakota, served as a clerk in the Treasury Dept. in Washington, D. C. from 1877-79, and became a Yankton County, Dakota Territory Superintendent in 1880. In 1885, he was a GLO Surveyor in Colorado and became embroiled in a dispute with the corrupt S. G. Office there at the time. His survey was suspended, and he countered by having a letter of his published in the Congressional Record as part of the Benson investigations. He pursued the issue for 34 years, and finally received his extra money in 1919, the year before he died. Ambrose next was a surveyor of jetties for the Corps of Engineers in Florida.

By 1893 he was a Clerk in the General Land Office in D C., a Special Agent for the GLO in Oklahoma in 1895 in a survey of the "neutral strip", and was an Inspector in Florida. He made a survey in Idaho under Special Instructions in 1898 from the Commissioner to survey damages on the Idaho/Canada Boundary. In 1901 Barber performed a Special Survey for the GLO in Michigan. In 1903 he was named a Special Examiner of Surveys, and Barber was the government surveyor for the prosecution in the Puter land fraud trial in 1904 in Oregon. He did 11 examinations in Washington, 1 in Idaho in 1896, and one in Oregon in 1903. In 1907 he surveyed 55 islands in Vilas County, Wisconsin for the government.

Amherst was the author of the 1902 "Manual of Surveying Instructions", written while a Clerk at the Washington, D. C. office of the GLO, a position he held until at least 1910. While a Clerk, he critiqued the notes and plats that came in, including the controversial ones from the rival USGS from the Fairbanks Meridian and Baseline in 1910. He severely criticized the work and editorialized on the notes.

During the time he lived in Washington, D. C., he was: Author of "The European Law of Torture.", published in 1894; Author of "The Benevolent Raid of General Lew Wallace, How Mexico was Saved" in 1864, "The Monroe Doctrine in Action", 1914; author of "My Brief Statement of Official Wrong Continued Thirty Years, Who Perpetrated It?", published by Beresford, Washington, 1919; author of "Light on the Origin of American Rectangular Surveys.", 1918; author of "Okonook, Idaho, to Francis Hodgman, Letters: 1899-1901." He died in Washington, D. C. and is buried in Arlington National Cemetery. (biography) See WA GLO Surveyors for the maintained version of this information.

Barker, John Westbrook

1882-1967

Dr/Clerk

Clerk

to

no more

1907

Born in Nebraska, John grew up on a farm there before moving to Meridian, Idaho with his family by 1900 while still a student at age 18. He was a Stenographer-Typewriter in the Surveyor General's Office of Ernest G. Eagleson in 1907. John was working on a farmer in Lassen county, California in 1910 and was an assistant U. S. Attorney in Fairbanks, Alaska in 1912. He lived in Buhl, Idaho before he enlisted in the U. S. Army as a Major from 1917-1919. After he was discharged, he worked on a farm in Twin Falls before married Jeanne Briar of France in Reno, Nevada in 1920.

By 1930. John had one son and was living in Oklahoma as an attorney for the insurance industry. He worked in that industry in various locations in Connecticut, Massachusetts, and Maine until he retired. The choice of this John Barker is by limited choices, proximity, and capability.

Barry, John P.

1854

Dr/Clerk

Clerk

to

no more

1892

Born in Oregon, the son of a merchant, John was in Idaho City by 1870 with his family and was at home and still in school there in 1880. John was a Transcribing Clerk in the Surveyor General's Office of Willis Pettit in Boise in 1892 and an assistant melter in the Boise Assay Office in 1895. He enlisted in the service in the Spanish/American war in 1898 and served as a Regimental Hospital steward until 1899. John was a salesman in in a bookstore in Boise in 1900 and was single and living with his sister's family in Boise as a manager of a renting company in 1920. It appears he never married.

Bates, Thomas**Walter****"Walter"**

1884-1929

USDS

Contract 319 1909

to

no more

Born in Utah, Thomas was in Idaho living with his family by 1900, and still in school at age 16. His father was a miner and railroad promoter. Thomas received Contract 319 in 1909 for one township and a portion of the 1st Standard Parallel North, Southeast of Rexburg. He was listed as a government Surveyor in 1910, living with his mother in Boise. Thomas soon went to work for the Direct System in Idaho and Washington, beginning with Group 6 in 1911. He continued at that until he died of a ruptured stomach ulcer at age 45 in 1929, still living with his mother.

Baxter, James

1834-1904

USDMS

Mineral Surveys 1875

to

no more



Born in England, James immigrated to the US. in 1841 with his family, where they lived in New York at first, and then New Jersey. James attended the public schools and then Columbia University, where he graduated as a mining engineer. James married Amanda Langwith in New Jersey in 1854, and they ultimately had 8 children.

Along the way, he worked as a machinist for the Rogers Locomotive Company and in 1856 went to Chili for three years for the Southern Railroad. James returned from Chili and bought a mine first in North Carolina and then Colorado. In 1861, James sold all his property and joined the New York Regiment of Engineers, working up in rank from Corporal to Captain.. His last assignment was on the staff of General Gilmore, and he mustered out in 1864. . He was wounded several times, the last time breaking a hip at Fort Johnson, South Carolina.

After he recovered, he went to Colorado and then South and Central America to operate mines. He ended up in Idaho by 1874, where his daughter Joanna died in 1877. He was a Mining Engineer in Atlanta Mining Camp, Idaho in 1880 and went to Mexico in 1883, where he engaged in constructing a smelter and a railroad. James moved to Boise in 1892 and established a foundry and machine shop under the name, Boise Iron and Reduction Works, used to build quartz mills. He was living in Evanston Illinois in the 1890's where he was representing mining companies as a mining engineer and general manager. James returned to Boise by 1900 as a mining engineer. He died in Boise in 1904.

**Bedolfe,
Maitland
Henry**

-1925
USDMS
Mineral Surveys 1898
to
no more

Born in England the son of a minister, Maitland immigrated in 1873 to the US., and was a surveyor in Golden City, California in 1880, where he had just married California native, Sarah Hanley. He was in San Francisco in 1886, Utah in 1887, Latah County, Idaho in 1889-94, and was bonded as a USDMS in Idaho on 12/20/1898, when he lived in Centerville, Idaho. While there, he assisted James M. Morrison in the design and survey of eight miles of flume and a long pipeline that was used to drive a pelton wheel. Maitland was a civil engineer in Tacoma from 1897-1903, a civil engineer for SPRR in Lane County, Oregon in 1910, and the same in Oakland, California in 1920. He died in Moscow in 1925.

Bell, John D.

1865-1955
Dr/Clerk
Clerk 1899
to
Chief Clerk 1905



Born in New Hampshire, the son of a physician, John graduated from Dartmouth. He was living at home in New Hampshire in 1880 and lived in Yakima, Washington in 1889 where he married Mary Ann Bond. By 1898, he was a Copyist in the Surveyor General's Office of Joseph Perrault, and in 1903 was a Stenographer and Typewriter again for Perrault. He continued as a Computer for Ernst Eagleson in 1903 before being promoted to Chief Clerk for Darwin Utter from at least 1905-1910.

John was still noted as a Clerk in the Land Office in Boise in 1913. John was doing clerical work in 1916 and was a bookkeeper for a bakery in 1920. He took a position as a Professor of French in 1922 for the College of Idaho in Caldwell, continuing until at least 1940

Bell, Peter**Wilson****"Wilson"**

1828-1910

USDS

Contract 1

1867

to

Contract 4

1867

Wilson was born in Pennsylvania, and came to Oregon by 1859 when he was a compassman for his brother-in-law, La Fayette Cartee. When La Fayette moved to Idaho in 1862, Wilson followed him, and was elected to the Idaho Territorial Legislature. When La Fayette became Idaho Surveyor General in 1867, he chose Wilson for Contract Number 1 to set the Initial Point. Under that Contract in the Spring of 1867, he also ran the Baseline West almost to Oregon, the Baseline East for 102 miles, the 1st Standard Parallel South West for 36 miles, and the Boise Meridian South for 102 miles. He was stopped to the South short of the State Line by the flooding, raging Owyhee River.

Wilson's sister-in-law, Henrietta Bell, was taking care of the Cartee children after their mother, Mary Bell, died in 1862, and Wilson and Deputy Surveyors Allen Thompson and Darius Baker were living in the Cartee house in 1870. Allan Thompson was awarded Contract 2 to run the Meridian North and run two Standard Parallels. Allan was the Notary for part of the Meridian South, and may have helped run one crew for a portion. Future Deputy Surveyor Darius Baker, Henrietta's brother, was a chainman on most of the early work for Wilson. Wilson received Contract 4 two months later for the exteriors and subdivisions of 20 townships along the Snake River generally East of Boise. Contract 6 came in 1868 for four townships near Boise followed shortly by Contract 8 for one township that had been part of Contract 4.

Contract 9 in 1868 was for the exteriors of 33 townships generally South of Boise, and the subdivision of three townships somewhat near Boise. Contracts 12 and 13 in 1869 were for the first 164 miles of the 1st Standard Parallel South East and the whole 294 miles of the 2nd Standard Parallel South East to the State Line. Contract 15 was for seven townships near Boise, 4 of which were surveyed in the Winter of 1870, and the other three were postponed to another Contract. Contracts 19 and 22 were for 24 townships in the valley near Boise, and were surveyed in 1870.

His last Contract in 1872 was for 14 townships along the Snake River between Twin Falls and Burley. Wilson ran for Ada County Surveyor in 1868, 1869, and 1870, and was probably elected. He surveyed Pioneer Cemetery in downtown Boise in 1872, and had obtained a passport in 1871 for some reason. He was in Lewiston, Idaho in 1880, in Nez Perce County in 1885, and was a surveyor in Lewiston, Idaho in 1900. Wilson lived with a sister in his home town in Ceres, Pennsylvania in 1910, just before he died. He

Benson, John**Adelbert**

1846-1910

Rep

Contract 84 (under 1880
the name of John L.
McCoy)

to

Contract 110 1884
(under the name of
John L. McCoy)



John Benson was head of the Benson Syndicate, a fraudulent crime organization that perpetrated fraud on the General Land Office from 1883-1886 in Washington and Idaho, and from 1875-1888 in other western states. John was a legitimate U. S. Deputy Surveyor in 1873-74 in CA, and soon started doing fraudulent surveys. He bribed Surveyor Generals, Congressmen, GLO officials, examiners, and judges to cover up his crimes.

At one time it is reported that John had up to 60 employees involved in the field and office. He avoided conviction of these crimes on technicalities, bribery, and with political pressure. These surveys covered about 118 townships in Washington and at least 48 townships in Idaho. John is said to have netted \$2,000,000 from fraudulent surveys in the ten states. The fraud was bad enough in its effect on public expenditures, but the biggest costs were with the fraudulent surveys that were created. Surveyors and landowners have been trying to determine boundaries relying on fictitious notes and plats for over 100 years. The BLM never did resurvey many of these townships, even though they knew they were fraudulent.

John was born in Jefferson County, New York, and graduated from Warren Collegiate Institute in Illinois in about 1866. He was elected Keokuk County Surveyor in Iowa and served for 5 years before moving to California, initially to teach school. He married in Iowa in 1866. He was awarded his first Contract in 1873 for \$1814, and later the GLO would question all of his surveys as suspect. His brother William was a Deputy Surveyor in California in 1880, and John was a delegate to the National Republican Convention in 1880.

John was the victim of an assassination/shooting in 1885. He was in his office in San Francisco, when an engineer and acquaintance from Wyoming by the name of Charles W. Brown entered. He locked the door behind him and told Benson "I'm in trouble with a woman and need your advice." Benson had another appointment, and rose to leave, saying that he would be back. Charles came up to Benson, shooting him by grazing his neck. Benson grabbed Charles and in the scuffle, John was shot through the cheek, a serious but manageable wound. They continued scuffling, with three more shots fired, at least one a self-inflicted wound to his own temple by Charles. Charles then started slashing his own throat, and died about the time help arrived in the room. Apparently Benson owed Charles a sum of money, about \$5400. Benson had been unable or unwilling to pay.

An honest Commissioner of the General Land Office was appointed in the person of William Sparks in 1885, and he sent a series of investigators to California to examine surveys of the Syndicate. They were bribed, politically dismissed, and sent back to Washington. They did accumulate enough evidence to indict Benson and all his crew in 1887. Corrupt prosecution, legal maneuvering and political intervention prevented any convictions from sticking. In 1895, Benson and his crew were even paid for the fraudulent surveys that were examined and challenged, and the whole case was closed in 1898.

Syndicate members continued to receive Contracts in California, and John went on to forest land fraud schemes. He was indicted for fraud with school lands and for bribing a federal official in 1903. The bribery indictment was appealed all the way to the U. S. Supreme Court in 1904 on jurisdictional issues with Benson losing there. For crimes of land fraud of 12,000 acres in Tehama County, California, he was convicted in 1907 and sentenced to 10 years in jail. That case was decided in the Ninth Circuit Court of Appeals in March, 1909. John was sentenced to a year in the Alameda County Jail, was released on May 9, 1910, and died the next day driving to his ranch near San Ramon.

His first wife lived with her sister in San Francisco in 1910, lived with her son Ernest in 1920 and 1930, and died in 1935. John had divorced his first wife in 1878, but may have lived with her sometime after that enough to establish a common law relationship. He remarried to Grace Gates later, and the two wives fought over his estate, meager as it was. His will left all but \$500 to Grace.

**Birdseye,
Joseph Warren
"Warren"**

1831-1901

Dem

USDMS

USDS

Mineral Surveys 1890
to

Mineral Survey 1900

Born in Connecticut, Warren was living with his mother and siblings in Huntington Connecticut in 1850. His father had recently died, and they were living near the relatives of his mother. Joseph married Mary Jerusha Johnson in Connecticut in 1859, and they soon had a daughter. They were living in Brooklyn, New York from 1865-75, where he was a coffee and spice dealer. Warren was in Salmon, Idaho involved in Mining in 1880, and lived near there the rest of his life. He was elected Idaho Speaker of the House from 1879-80. That Legislative Session was deadlocked in the House, and took 24 days to organize, leaving only 16 statutory days to complete their business. Warren was Lemhi County Surveyor in 1881-85 and continued at that all or part of the time until he died.

The GLO acknowledged him as an active Mineral Surveyor in 1891, living in Salmon City, Idaho. Warren surveyed 22 Mining Claims in Idaho from 1891-1900, and served as a Commissioner and Chief Engineer of the State Wagon Road from 1893-94. He was listed as a surveyor in Salmon in 1900 and surveyed the Gibbonsville townsite in 1898. Warren may be the namesake of Birdseye Creek West of Salmon. He died at his home on Big Flat, near Salmon, in 1901.

**Bishoprick,
Frank**

1863-1928

Dr/Clerk

Clerk 1897

to

no more

Born in Canada, Frank came to the U. S. in 1880 and lived in Idaho by 1897 when he was noted as a Transcribing Clerk in the Surveyor General's Office of Joseph Perrault. By 1900 he was in Skagway and in Fairbanks in 1910, both times as a merchant.

**Blossom, David
Henry**

1872-1957

USDMS

Mineral Surveys 1902

to

no more



1896

Born the son of a farmer in 1872 in Vermont. David graduated from high school in Granville, New York, where his family had moved before 1892. He graduated from Middlebury College in Vermont, and then attended MIT to study Civil Engineering for one year in 1896-97. He received Joint Contract 219 in Utah in 1899 as a U. S. Deputy Surveyor in Utah in 1899 for five townships with Alfred B. Lewis. David surveyed one Mineral survey in Idaho in 1902 in the very Southeast corner of the state and was living in Salt Lake City.

David was a draftsman in the Utah Surveyor General's Office in Utah in 1903. He listed himself as a civil engineer in canal construction in 1910 in Danielson Springs, Idaho and was the City Engineer of Salt Lake City in 1912. He reported to MIT that in 1915 he was the General Manager of American Falls Canal and Power Company, working out of Salt Lake City. David married Florence S. Snevely in Salt Lake City in 1931, and they had no children. She was a University of Washington graduate and former college instructor. He was either an engineer or manager of canal companies out of Salt Lake City until near his death in 1957.

Bonser, Robert**C.***1859-1941*

USDS

Contract 195 1898

to

Contract 225 (with 1901
James H. Robb)

OR PE 103. Robert was born in Oregon, the son of a farmer, and raised on Sauvies Island, near John A. McQuinn, his uncle. He attended school in Portland and graduated from Portland Business College in 1881. He studied civil engineering under William Gilbert, and in 1887 joined the firm of McQuinn and Hurlburt, surveying railroads and subdivisions. He was an axeman for John McQuinn in 1887 at Warm Springs and a chainman for engineer Eugene Schiller in 1896 at Wallowa on Contract 648.

Robert received Joint Contract 667 in 1897 with William C. Elliott for two townships in Northwestern Oregon. They shared the work with each surveying one township. They were examined in 1898 by David Kinnaird and in 1900 by William Lightfoot. He received two Contracts in the Idaho Panhandle in 1899, one a Joint Contract with 21-year-old Frederick Riem in the far Northern Panhandle. They shared the work and used Fred's brother as a chainman. H also had a Joint Contract with James H. Robb in the Clearwater Valley in 1901 for seven townships, and they shared the

Robert was given a survey in Oregon as Compassman to correct a survey by Samuel Lackland that had been surveyed some three years earlier. Robert resurveyed about three Sections in the Northwest corner of T27S R9W in Oregon, noting the corners in error by Lackland, and setting new ones. Robert formed a partnership with Philo Holbrook in 1902, until Philo was elected Multnomah County Surveyor in 1905, at which time Robert became Deputy County Surveyor. He continued at that until elected County Surveyor in 1914, a position he held until 1933. Robert lived in Portland from at least 1889-1933 and married Minnie Preston in 1898. He was always a civil engineer or surveyor.

Booth, Arthur**Allen***1858-1951*

USDMS

Mineral Surveys 1898
to
Mineral Survey 1910

Member ASCE. Born in Wisconsin, Arthur came to the Northwest in 1879 with NPRR as an engineer. He was working as a Mining Engineer in Spokane from 1897-1907 when he surveyed 44 Claims in 1897-99 near Republic, Washington. Arthur was inactive in Washington for 4 years, and then surveyed 51 Claims north of Spokane, and one in Oregon, from 1903-1907. At the same time, Arthur surveyed 84 Mineral Surveys containing 212 Mining Claims in Idaho from 1898-1908. They were mostly in Shoshone and Idaho Counties with a few in Bonner and Clearwater Counties. While at Spokane, he filed suit claiming he was defrauded in a mining stock scheme in 1902.

He continued to live there until at least 1930, except in 1920 when he was living with his first wife in California. She died in 1922 in Spokane, and in 1923 he married Daisy Riblet, the divorced ex-wife of Royal Riblet of the Riblet Tramway Co. They travelled to Havana, Panama, and Europe from 1928-1930. Arthur was a director of several mining corporations, and died in Los Angeles, preceded in death by his wife Daisy by two years.

Booth, Albert**Roger****(Alfred?)***1838-1906*

Dr/Clerk

Special Instructions 1899
to
no more

A. R. Booth was born in Clement, Michigan and attended Kalamazoo college in 1852-53. he lived in The Dalles, Oregon by 1858 and in Idaho by 1870 when he dissolved a partnership with H. P. Isaacs at Oro Grande (Loon Creek). He was also listed as a merchant in the census as born in Michigan. J. B. Wickersham appointed A. R. Booth as Deputy Clerk for the Second District Judicial Court at Oro Grande in 1871. A. R. Booth served 19 days as a Clerk to Surveyor General, Lafayette Cartee, and was noted as born in Ohio. He was a druggist with J. A. Rupert at Oro Grande in 1875 and became a physician by 1875. He lived at South Mountain, Idaho and helped plan a Centennial of the of July 4th Celebration in 1876.

Sometime before about 1876, he owned a drug store in Boise, and that would have given him the opportunity to work in the Surveyor General's Office for a few days. A. R. left Idaho in the late 1870's and went to California, probably following Susanah Call, who had recently become a widow with two children. They married in Elko, Nevada in 1878, where A. R. had owned a nearby pharmacy. They had two children on their own. A. R. sold the pharmacy and they moved to San Louis Obispo, California where Susan's family resided. He was a druggist, born in Michigan, in Paso Robles, California in 1889 and worked in Real Estate for several years thereafter. This might be two people since the Register in 1873 noted he was born in Ohio. There were no other individuals named A. R. Booth in Idaho found in the records.

<p>Booth, Clarence Morton 1880-1935 SES Special Instructions 1909 to no more</p>	<p>Clarence was born in Indiana, and began working for the Big Four RR after high school. He secured a job with the Department of Justice in Washington, D. C. He attended Georgetown while in D. C. and graduated in law in 1906. Clarence then worked for the Department of the Interior in the Pacific Northwest, locating in Boise as a Special Agent in 1909. He resigned his government job in 1911 and started a law practice in Hailey. He relocated to Twin Falls after six months</p>
---	---

<p>Bossert, Otto Heinrich "O. Henry" 1871-1952 USDMS Mineral Surveys 1900 to no more</p>	<p>Born in Milwaukie, Wisconsin the son of a leather trader, Otto almost always lived in Milwaukie. He graduated in Mining Engineering from the University of Wisconsin in about 1892 and was working at a mine on the Uintah Indian Reservation in Utah in 1900. He was living part time in Salt Lake City, Utah from 1900-1903, rooming at various places when in town. Otto was promoted to Superintendent of the Raven Mine in 1903. Otto was noted as a Deputy Mineral Surveyor in Utah in 1903, and had been also bonded as such in Idaho in 1900.</p>
---	--

He was back home in Milwaukie in 1910 as a building contractor, still single. His parents died in 1911 and 1913, and in 1920 Otto was at home with a brother and his younger sister Charlotte. His occupation was as a superintendent in industry. The brother died, and Otto was living with Charlotte in 1930 and 1940, apparently retired. He had obtained several passports and travelled a lot, sometimes with Charlotte. He died in Milwaukie in 1952, and Charlotte in 1947, both still single.

Bowen, Oscar**Sidney****"Sidney"**

1867-1950

USDMS

Special Instructions 1899

to

Mineral Surveys 1901

PLS 1622. Member ASCE in 1909. Born in Missouri, Oscar's father died while he was a teen, and the family went to Iowa to live with his mother's parents. He worked for railroads as an engineer from 1888 on, including the Coeur d'Alene RW and Navigation Co., the Washington and Idaho RR, the Seattle, Lakeshore and Eastern RR, the Spokane Falls & Northern RR, the Nelson & Fort Sheppard RR and the Great Northern RR. The exception was from 1894-98 when he was a Draftsman for Surveyor General William Watson in Olympia.

Oscar had been residing in Spokane as an engineer in 1893. He surveyed 9 mining claims near Spokane from 1899-1901 and 14 Claims in in Idaho in Bonner and Idaho Counties from 1900-01. Oscar pumped a handcar from Spokane to Seattle to inspect a RR grade. In 1901 he married Imogene Anders, the daughter of a Supreme Court Justice in Olympia, and at that time was made Resident Engineer of Great Northern at Spokane. They lost a young son in 1903. He was later transferred to Seattle in the same capacity. In 1914 he was promoted to Principal Assistant Engineer for Great Northern at Seattle and was still in that capacity in 1923. By 1930 Oscar was an engineer for GNRR in Minnesota. He was the brother of Walter Bowen. and died in Wenatchee. (biography)

Bowen, Willard**Eugene****"Eugene"**

1853-

Dem

USDMS

Mineral Surveys 1891

to

no more

Born in Illinois, the son of the Warden of a County Poor Farm, Eugene was a salesman in Michigan in 1873 and married Mina L. Rowland in Michigan in 1877. They had one son. Eugene lived in Weiser Idaho in 1891 and was noted as a USDMS in 1892 while there, but finalized no surveys. He move to Ontario, Oregon in 1892 and started a newspaper, the Ontario News. He ran a losing battle for Malheur County Surveyor as a Democrat in 1892. He patented a new level rod with a continuous face in 1898, that had been invented while he still lived in Ontario. He moved his newspaper to Baker, Oregon in 1897 and soon suspended operation.

Eugene and Mina had divorced by 1900, when Mina and their son were in Michigan, where Mina was working as a servant. Eugene was single and a quartz miner in the Bohemia Mining District in Oregon in 1900. Mina remarried and died in Michigan in 1920. Eugene was a laborer and servant on a farm in Saskatchewan in 1916.

**Bradley,
Walter A.**

1880-1901

USDS

Contract 217 (with 1900
Herman D.
Gradon)

to

no more

Born in Oregon, the son of the Clackamas County Assessor and the nephew of USDS Herman Gradon, Walter was still in school in 1900 at age 20. A Walter Bradley was an axman for Robert Bonser and Fred Riem in Idaho in 1900. He had been working on the survey crew of his uncle for some time, and they had secured Joint Contract 217 in Idaho in November 1900 for 17 townships in the Snake River Valley. They were to start in the spring of 1901, but after a 7 week illness, Walter died in Oregon City in March of 1901 of malaria at age 21. Herman went over to Idaho in the summer of 1901 and surveyed 12 of the townships near Twin Falls , and the rest of the work was surveyed by others. When Herman came back from the survey, he was the administrator of Walter's Estate. worth \$350.

**Breckon, John
Thomas**

1857-1933

USDMS

Mineral Surveys 1904

to

Mineral Surveys 1910



Born in Canada, John immigrated to the U. S. in 1883 and was ultimately naturalized. He had married Elizabeth Annetta English in 1882, and they had 6 children. John was a civil engineer in Salt Lake City in 1900 and 1910, and while there he surveyed 31 Mining Claims in Idaho. He moved to British Columbia in 1921 and worked for the City of Vancouver Engineering Department. Eventually, he became City Engineer of Langley, British Columbia until he retired. He died in nearby Murrayville in

**Briggs, Edson
Darwin "Joe"**

1850-1915

Rep

Special Instructions 1889

to

Special Instructions 1910



ID PLS 81. Born in Vermont in 1850, he was the nephew of Sewall Truax, with whom he had a Joint Contract in Washington by 1873, the first of several. (Sewall was his mother's brother.) Edson was educated in Vermont University in surveying and civil engineering, coming West right after school. He continued government surveying until 1882 when he was elected County Surveyor of Garfield County, serving until 1889. Edson had participated, sometimes with others, in the survey of 191 townships in Washington. He married widow Georgia Carter, a preacher's daughter, in 1880 at Lewiston, and they had two children.

Edson then moved to Lewiston, Idaho by 1889, where he remained to survey allotments on the Nez Perce Indian Reservation for four years with female allotting agent, Alice Fletcher. She arrived in 1889, and hired Edson in July to be her surveyor. He began by retracing the exteriors of the Reservation and searching for corners from whatever existing surveys there were. Alice and Jane lived in the survey camp in the field most of the time, supervising the work and meeting with the Indians. She returned for three more seasons and finished in 1892.

Edson received three Contracts on the Reservation during this time, surveying townships intended for allotments. During her time, Alice received little cooperation from the local Agency Staff. In 1898, Edson was elected Nez Perce County Surveyor, and also Lewiston City Engineer. He was a GLO Surveyor in Idaho and Oregon from 1890-1902, doing occasional surveys. He died in Lewiston, ID. (biography)

**Brigham,
Frank H.**

1850-1936

Rep

SES

Special Instructions 1900

to

Special Instructions 1902



1912

Born in Massachusetts, Frank received his early education there, and enlisted in the Navy in 1867. His parents had moved to Minneapolis in 1865, and he joined them in 1869, and was in the employ of the government as an engineer and surveyor for 12 years. He then went to Nebraska as a surveyor by 1876, when he married 16-year-old Isabella Flett in 1876, two months after her first child was born, who had a surname of "Corp".

Frank remained there as a surveyor until 1888, when he moved to Spokane, and then to Pendleton, OR, where he remarried to 17-year-old Sarah Elizabeth Adams in 1891, 24 years his junior, after Isabella had died in Nebraska in 1890. Isabella is buried at Ingleside Cemetery, Adams County, Nebraska, which was the cemetery for the "Asylum for the Incurably Insane". She was listed as "patient number 88", and has no marker, as is the case with most other burials there. Some sources note that Frank sired a son by Christine Flett, the 23-year-old sister of Isabella, in 1889, that was born in New Mexico. In 1891 he was appointed Chief Clerk in the Oregon Surveyor General's Office, lasting 2 years, but in 1895, Surveyor General John Arnold reinstated him to that position.

**Britt, Richard
Horn**

1862-1939

Dem

EX

USDMS

Special Instructions 1893

to

Mineral Surveys 1894



Maine PE 336. Born in Missouri, the son of a farmer, Richard graduated from the University of Missouri in 1888 in civil engineering and entered the employ of the Northern Pacific RR as a Land Examiner. He later joined the Willamette Valley and Cascade Mountain Wagon Road, inspecting the lands from the Willamette Valley to the Snake River. He came to Boise in 1892 as a civil and mining engineer, completing 10 Mineral Surveys and one Survey Examination, until going to work as manager of the Poorman Gold Mines in Silver City. Governor Steunenberg appointed him a member of the Idaho State Arbitration Board in

He was a mining engineer in Rockland, Maine in 1911 when he married teacher Grace L. Harrington, 24 years his junior. They had two sons, with the first one stillborn. They were living in Hampton, Massachusetts from 1920-24, where Richard was the proprietor of a garage. In 1930, Richard was back in Rockland, Maine as the City Engineer. He was a consulting engineer in Rockland in 1938 and died there in 1939.

**Bromwell,
Charles
Sumner**

1869-1915

USS

Special Instructions

to

no more



Born in Kentucky, the son of a State Senator, Charles graduated from West Point with honors. He was with the Army Corps of Engineers in Wyoming when he surveyed part of the boundary of Yellowstone national Park. He married Lettia G. Scott in 1896 and rose to the Rank of Colonel when he died of suicide in Hawaii in 1915.

**Brooks,
Charles P.**

1851-1918

USDMS

Mineral Surveys 1908

to

Mineral Surveys 1910



Member AIME. Born in New York, Charles graduated from the Sheffield School of Yale College in 1872. He was: in the City Engineer's office of New Haven, CT, 1872-74; Texas and Pacific RW, 1874-1915, in Salt Lake City; and Engineer for various Mining companies in Utah by at least 1880, when he was listed as a civil engineer. He married Millicent Amilia Godbe in 1876 in Salt Lake City.

Sometime about 1880, Charles formed an engineering partnership with Richard H. Browne, called Browne and Brooks, that worked out of Salt Lake City for about 30 years. This was about the time Richard married Nellie Godbe, the sister of Millicent. After three children, Millicent died in 1889, and in 1891 Charles remarried to her sister, Miriam G. Godbe. Charles was also listed with his family as a mining engineer in Salt Lake City in 1900 and 1910. Charles surveyed one Mining Claim in Bear Lake County in 1908 and 13 more there in 1910. He also surveyed 4 more Mineral Surveys in Idaho after 1910. He died in 1918 in Salt Lake City.

**Brown, Amon
Benjamin
"Amen"**

1882-1947

USS

Special Instructions 1906

to

no more



1907

Born in Maine, Amon graduated from the University of Maine in 1907. He was an assistant engineer for the U. S. Reclamation Service in 1910 when he began the survey of Section 2, T9S R23E in the Minidoka Irrigation District. He continued making surveys for the District through 1915.. He married Mora Marie McManus in Minidoka county, Idaho in 1911, and they had three children. Amon was named Manager of the District in 1916 and was left

Amon was an engineer for the State Highway Department in Rupert, Idaho in 1920. and a civil engineer in Twin Falls in 1925. He would move to Riverside, California by 1930 where the census listed him as a civil engineer for the County. He was County Surveyor in 1940, deputy county surveyor in 1943 and 1945, and died in Riverside in

**Brown, Robert
E. Lee**

1865-1902

USDMS

Mineral Surveys 1891

to

Mineral Surveys 1891

Robert was a native of Philadelphia, Pennsylvania and was educated as a mining engineer. His father was a prominent lawyer with offices in London, Philadelphia, San Francisco, and Victoria. Robert lived in Spokane in 1898 and Wallace, Idaho in 1902 and had a wide reputation around the world as a mining engineer, travelling extensively. Robert surveyed 10 mining claims in Stevens and Pend Oreille Counties in 1889-90.

Brown won a \$5,000,000 judgment against Transvaal, when the government revoked his title to some valuable mining property. He had obtained the rights during a land rush, when land was opened up, by using a heliograph to transmit his claims, when others were using fast horses to convey their claim to the authorities. Before that, Brown used 300 men to form a flying wedge to hurl himself to the front of the line. There were 12,000 men fighting to get in the front of the line. He successfully claimed 1000 tracts.

He was nicknamed "Barbarian Brown" for his newspaper in support of the mine owners in the mining hostilities in the 1890's. Brown set up a printing office in Coeur d'Alene, Idaho and published "The Barbarian", devoted to exposing the lawlessness of the unions. He defended the shop and paper carriers with an arsenal, including a cannon. He was 5' 8" tall, with curly brown hair and dark blue eyes. Brown died of T. B. just after arriving in Arizona, but he had been a resident of the Hoffman House Hotel in New York City. (biography)

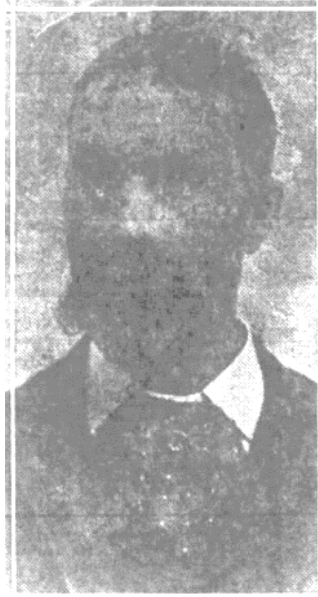
**Browne,
Richard Henry**

1842-1923

Mineral Surveys 1879

to

Mineral Surveys 1891



Born in Dublin, Ireland, Richard graduated from Trinity College in Dublin before immigrating directly to Utah in 1874 upon graduation. He was a Mining Engineer in Salt Lake City by 1880 and immediately formed an engineering partnership with Charles Peter Brooks for 30 years named Browne and Brooks. Richard married Sarah Nellie "Nellie" Godbe, 20 years his junior, in Salt Lake in 1881, and they had 8 children. Two of Nellie's sisters were married to UDSMS Charles Peter Brooks at two different times because of the death of the first sister.

Richard surveyed 38 Mineral Surveys from 1880-89 in Idaho, and one more there in 1906. Richard was listed as an active Mineral Surveyor in Idaho in 1891, living in Salt Lake City. The 1900 and 1910 Censuses also listed him as a Mining Engineer in Salt Lake, where he lived until he died there in 1923. His obituary noted that he had retired about 1908.

**Bucher,
Edward
Verdinand**

1846-1918

Rep

USDS

Special Instructions 1909

to

no more



ID PLS 55. Born in Zurich, Switzerland, Edward studied civil engineering there for four years, and after graduating he surveyed in Switzerland and France. He married Ana "Annie" Fluckiger in Switzerland, and they immigrated to the USA in 1876. They came to Utah, first to Providence and then to Bear Lake County at Montpelier via a short stay in Nounan. They raised a family and spent the rest of their

Edward was a Surveyor, serving five consecutive terms as Bear Lake County Surveyor, retiring in 1914. Annie died at Montpelier in 1910, and Edward died there in 1918 of a stroke. worked as a surveyor for Bear Lake County in 1910.

**Burke, Xifery
S. "X. S."**

1847-1890

Rep

USDMS

Mineral Surveys 1888

to

Mineral Surveys 1889

Born in Massachusetts, X. S. lived in Marion Lake, Minnesota in 1875, where he owned a Republican newspaper. He began a Newspaper called The Black Hills Tribune in Crook City, Dakota Territory in 1876. This venture was short-lived, because the County Seat was moved from Crook City to Deadwood in that year. X. S. was listed as the owner of a newspaper in Custer, North Dakota in 1880 (The Chronicle). By then, he was married to Margaret E. Burke from England and was active in Republican politic. X. S. served as Shoshone County Auditor and Recorder from at least 1884-1887. From 1888-90, he surveyed 12 Mineral Surveys near Wallace, Idaho. and died in Wallace, Idaho in 1890 at age 43.

**Burr, Samuel
Prentiss**

1877-1931

USDMS

Mineral Surveys 1906

to

Mineral Surveys 1907



ID PLS 51. Born in Nebraska, the son of a farmer, Samuel moved to Genesee, Idaho in 1887 with his family. He enlisted in the Army during the Spanish American War and was out by 1900 when he was a lead miner in Mullen, Idaho. Samuel surveyed 15 Mineral Surveys and 3 USLM locations in Valley and Idaho Counties in Idaho in 1905-07. He married Myrtle C. Ellis at Polaris, Montana in 1911 and they had two children. Samuel showed up as a mining engineer at Bannock, Montana in 1918 and 1920.

He surveyed 6 Mineral Surveys in Idaho in 1894, two in 1917, and one in 1922. His obituary noted that at some time in his career, he was construction engineer for the Utah Eastern RR and an engineer of the old Salt Lake City Street RR to Fort Douglas. He continued as a mining engineer in 1920 and 1930, and died in Salt Lake in 1934.

**Burton,
Lafayette
Grant**

1860-1934

USDMS

Mineral Surveys 1902

to

no more



Member AIME. Born in Utah, the son of the Sheriff of Salt Lake County, Lafayette attended the University of Deserett in 1871, was a surveyor living at home with his mother in 1880, and married Ella Mitchell in 1888 in Salt Lake City. Lafayette and Ella had two children. He was a mining engineer in Salt Lake City in 1900 and 1910 and was bonded as a USDMS in Idaho in 1902 while living in Salt Lake.

He surveyed 6 Mineral Surveys in Idaho in 1894, two in 1917, and one in 1922. His obituary noted that at some time in his career, he was construction engineer for the Utah Eastern RR and an engineer of the old Salt Lake City Street RR to Fort Douglas. He continued as a mining engineer in 1920 and 1930, and died in Salt Lake in 1934.

Burton, J.

Dr/Clerk

Clerk

1907

to

no more

Born in New Jersey, J. Burton was a draftsman for the GLO in Boise in 1907 on the Register. It is not known whether he worked in the Land Office or the Surveyor General's Office. There was no one fitting that criteria on the 1910 Census, but there was a John F. Burton, born in Illinois, in Kootenai in 1910 as a school teacher.

Bush, Ada Miss

1842-1897

Dr/Clk

Clerk

1909

to

no more

Born in Indiana, Ada was in Idaho by 1907 when she was a Stenographer/Typewriter in the Surveyor General's Office of Ernest Eagleson. She was still a Clerk for the General Land office in 1920 and was a lifelong spinster, listed as a companion to her landlady in 1920. She died in Boise at age 88 in her home, and her death certificate was filled in by William D. Bush, probably her brother and an Idaho USDS in 1909.

Bush, Ben Eugene

1873-1944

USDMS

Mineral Surveys

1908

to

no more



Born in Iowa, the son of a farmer, Ben served in the Spanish American War and then graduated from the University of Idaho in 1903 in Mining Engineering. He was the Nez Perce County Surveyor in 1904 and Lewiston City Engineer in 1905. Ben surveyed one Mineral Survey for five Mining Claims in the Pierce City Mining District in 1908, and from at least 1909-11 he owned a Cigar Store in Lewiston.

Ben was referred to as the field agent for the State Land Board from 1909-1910. Ben married Caroline "Carrie" McConnell in Portland, Oregon in 1911, and they had two children. He was noted as a civil engineer for the State in 1920 and as a State Land Cruiser in Idaho in 1921. In the previous capacities, he was charged with evaluating all the Federal Land available for selection and picking the best to replace the Section 16's and Section 36's reserved to the State. The cause of this was that many of those State selections were in National Forest Reserves or National Parks. Ben was appointed Idaho State Forester in 1925 and promoted sustainable timber harvests. By 1940 he was listed in Moscow as a retired forester and died there in 1944.

Bush, James H.

1842-1897

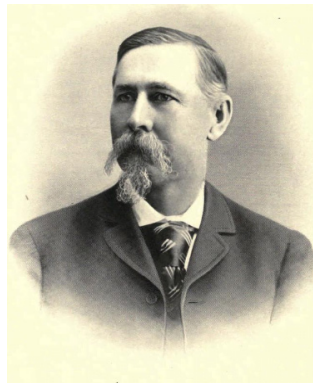
Dem

Clerk

1874

to

no more



Born in Michigan, the son of a farmer, James was mining near Boise, Idaho in 1865. By 1873-74, he was a Copying Clerk in the Surveyor General's Office of Lafayette Cartee. In 1874, James became one of the co-proprietors of the Central House , a mainstream hotel in downtown Boise. He bought out his partner in 1875 and married Ellen L. Kelly, the daughter of a Judge in 1876, siring three children.

By this time, James was also involved in Democrat poetics and ran for Ada County Commissioner, results unknown. He lived in Boise in 1880 as the owner of the Central House, and in 1882 he was hauling freight by wagon in and out of Boise. He leased the hotel to others in 1886 and made a trip to Michigan and his home in 1887. He was a breeder of fine horses and took two carloads of them back East in 1888 and sold them. James built a large home in Boise in 1892 and ran for State Treasurer as a Democrat in 1894 in a losing effort. The Central Hotel burned in 1893. He built an addition to his home in Boise in 1896, but died there in 1897 of stomach cancer at age 55, leaving an estate of \$55,000. When he died, he was Vice President of Capital State Bank in Boise, an institution he cofounded.

Bush, William Davis
 1875-1972
 USDS
 Contract 267 1905
 to
 Special Instructions 1907

Born in Indiana the son of a miller, William came to Idaho by 1905 when he received Contract 267 for 10 townships. William married Elizabeth Barter in 1907 and they had one child that died by 1910. He was the brother of Clerk Ada Bush. William received three more Contracts between 1906-1907 and then was in real estate for many years. Elizabeth died in 1942 and he remarried in 1954 at age 79 to 51-year-old Agnes Reed. He lived to be age 98, all in Idaho after 1905,

Butler, Millard Angle
 1879-1943
 USDS
 Special Instructions 1908
 to
 no more

Born in Minnesota, Millard was still there with his family in 1900, when he was a university student. The 1940 census noted him as attending college for two years. He married Helen Claire Browne in Columbia Falls, Montana in 1904 and was a Civil Engineer in Spokane in 1910 and 1911. Millard surveyed a segregation survey from 1908 to 1911 North of Sand Pointe, Idaho. He was named an associate member of ASCE in 1911 in Spokane, and in 1917 as a Major and a railroad engineer in St. Paul, MN, he was named a construction quartermaster to build a cantonment at Des Moines, Iowa.

Millard was in the Army before the First World War and in 1920 was a Colonel in Erie, New York. He lived in Norfolk, Virginia in 1921 where a daughter was born. Millard was a foreman for the WPA in 1940 in Norfolk, and died there in 1943.

Byler, Emmett Addison
 1868-1930
 USDMS
 Mineral Surveys 1902
 to
 no more

Member AIME. Born in Missouri the son of a lawyer, Emmett was a student at the University of California in 1890, and graduated in civil engineering in 1892 as a Hinkley Scholar. While there he played on the football team and was a member of the rifle team. Emmett authored a Ming Investor's Map of Cripple Creek Mining District in Colorado in 1899. He was a civil engineer in Victor, Colorado in 1900 and 1902 when he was bonded as a U. S. Deputy Mineral Surveyor in Idaho.

Emmett moved to Goldfield, Nevada by 1905 where he built a house out of bottles. He married Ellen Rhodes Collins in 1910, a widow with two sons. Emmett was part of Davis and Byler, a surveying firm in Goldfield from 1904-1916. He was listed as a mining and civil engineering in Goldfield, Nevada in 1910 and 1920. Emmett surveyed two Mineral Surveys in Verde Mining District in Arizona in 1916 as a Mineral Surveyor. He died in Alhambra, California in 1930.

Byrne, Peter F.

1857-1923

USDS

Special Instructions 1903

to

no more

Born in Wisconsin, the son of an Irish immigrant farmer, Peter had a twin sister. The family moved to Iowa in 1866. Peter was a civil engineer in Spokane in 1900 and was appointed Spokane City Engineer in 1902, after the former City Engineer was removed. Peter was sued by the former City Engineer, Allen F. Gill, but won at the Washington Supreme Court. As soon as he won in court, he resigned as Spokane City Engineer. He received a small Contract by Special Instructions in Idaho in 1903 to survey an island in Lake Tesemini in T53N R4W. (now known as Spirit Lake)

Peter was named a U. S. Deputy Mineral Surveyor by 1916 and surveyed two Claims in one Mineral Survey at Pierce City in Clearwater County, Idaho. He was a civil engineer again in Spokane in 1920, but he and his wife and daughter were living with another family, The head, James Herrick, was referred to as a "partner". Peter died in Spokane in 1923.

C., B. G.

Noted as copying notes on 6/23/1908

Dr/Clerk

Clerk 1908

to

no more

C., W.

Examined notes of MS 2291 of Edward Anderson

Dr/Clerk

Clerk 1907

to

no more

Cabell, Charles Ellet "Ellet"

1871-1934

SES

Special Instructions 1905

to

no more



Born in Virginia, the son of a farmer, Ellet studied law at the University of Virginia. He married Nannie Powell McCormick in 1899, and they were living with Nannie's parents with their daughter in 1900. Ellet enlisted in the Spanish American War in 1900 and was promoted to Captain, and then Major in 1900.

Ellet went to the Philippines and served for two years. When he returned, he apparently obtained a job with the General Land Office as a Special Examiner of Surveys. There was an "Inspector Cabell" that was noted in the newspaper as the Inspector from the General Land Office to examine Contract 258 of Stephen A. D. Hungate, H. H. Johnson, and Atress M. Kirchem in 1905. The 1905 Register listed Ellet as one of the few Examiners on the roster at the time out of Washington, D. C. Ellet was an attorney in Lynchburg in 1897 and returned to a farm in Lovington, Virginia in 1910-20 with his expanded family. By 1930, the abbreviated family had moved to Alexandria, Virginia where Ellet was listed as a Clerk in the Department of Interior. He spent the last 14 years of his career there and died in 1934 in Alexandria.

Califf, William Culmer

1884-1850

USDS

Contract 279 (with 1906

Stephen A. D.

Hungate)

to

Contract 280 (with 1906

Stephen A. D.

Hungate)



Born in Oregon, William was still in school in 1900. He married Mary Blanche Kendall in about 1909. They had two children. He had received a Joint Contract with Stephen Hungate in Idaho in 1906 at age 22 for 17 townships near Salmon, Idaho. Another Contract on his own in 1906 was for 8 townships near Salmon and one near Grangeville.

William was living with his in-laws in 1910 in Oregon City as a deputy Clackamas County surveyor. By 1918 he was employed by a beverage distributor, and in 1920 he was a divorced surveyor and a roomer in Portland. William remarried to Helen Hazel Grymes in 1921. By 1929 William worked as a foreman for Pacific Gas and Coal company in Portland, and still held that position in 1942.

**Calloway,
Frederick
William
"Fred"**

1880-1933

USDMS

Mineral Surveys 1909
to

no more

Born in Michigan of a Canadian railroad executive, Fred graduated from the University of Minnesota in 1909. He married Bessie Edith Cain in 1901 in Minnesota, and they had three children. In 1900, he moved his center of operation to the Coeur d'Alene region, living in Wallace in 1910. He was involved in work in the Elk City area of Idaho, but practiced in a large area, generally specializing in litigation. He was in Alameda, California in 1920 and Spokane in 1930. At the time of his death, he had been very interested, as well as an investor, in the Crawford Mining Company 22 miles East of Orofino. Even when he was ill, he continued his supervision of the efforts there.

**Campbell,
Archibald**

1813-1887

Commis

Special Instructions
from the

Department of
State

to
no more

Born in New York, Archibald graduated from West Point in 1835 as a 2nd Lt. in the 6th Infantry. He served at: Jefferson Barracks, MO, 1835-36; Fort Jessup LA, 1836; Fort Sabine, LA, 1836; and as Aide-de-Camp to Maj. General Gaines, 1836. After discharge, he served as: Assnt Engr. Louisville, KY, and Cincinatti, OH; Railroad Survey, 1837; Civil Engineer for U. S. on topographical survey in Cherokee Country prior to moving the Indians, 1837-38; Engr. Maryland Crosscut Canal, 1838; Frostburg and Cumberland MD RR Survey 1838-39;

(cont.) Black River Canal, N. Y., 1839-40; Albany and West Stockbridge RR survey, N. Y, 1840-41; Civil Engineer on defenses of New York Harbor, 1841-42; and on Ohio River Improvements, 1843-44; Private Secretary to the Secretary of War, 1845-46; Chief Clerk U. S. War Dept, 1846-49; and from 1849-57, Clerk and then Chief Clerk to the Commission created to establish a process to create and survey the Boundary between the United States and Canada, from Vancouver Island to the crest of the Rocky Mountains.

In 1857, Archibald was named Commissioner for the Northwest Boundary Commission to supervise the process for the Americans. Britain had its own joint process with Three Commissioners appointed. There were two processes going on, the water boundary through Puget Sound, and the land boundary surveying East from Point Roberts. Archibald appointed John G. Parke as Astronomer and Surveyor, George Clinton Gardner as Assistant Astronomer and Surveyor, James S. Harris as Surveyor, William J. Warren, Secretary, and John J. Major, Clerk. Archibald is the namesake of Campbell Mountain in Glacier National Park in Montana.

**Campbell,
Charles Lois**

1878-1917

USDS

Contract 256 1904

to

Special Instructions 1904



William Brackett Campbell was one of the patriarchs of the Campbell surveying family, along with his brother Samuel Learned Campbell. William B. was the father of USDS William Ellis Campbell, who was the father of U. S. Deputy Surveyors, George Raymond, Charles Lois, Roy Thomas and William A. Burt Campbell. They were also neighbors and nephews of Homer Angell.

William E. Campbell and Roy Campbell were GLO Surveyors in Oregon only, and Roy Campbell worked as a direct employee after 1910. William Ellis Campbell had married the sister of Homer Angell, and everyone but William B. grew up at Fifteen-Mile Creek in Wasco County, OR. Charles was boarding at the Chemawa Indian School near Salem with his brother Roy in 1895. He was a chainman and axman for both Ed Sharp and his father from 1895-98 for several Contracts. He went on to graduate from the University of Oregon in civil engineering. Charles received Joint Contract 718 with his father in 1900, and his father, surveyed two of the townships in Baker County that year. The third township in Baker County was cancelled in 1904 for unknown reasons and given to another deputy. He used Charles and his brother Roy as crewmen.

They received another Joint Contract in 1901, and they surveyed several townships that year. William died at the end of the survey of T3S R44E, in the Wallowa Mountains West of Wallowa Lake, on October 18, 1901. That is the date of the final oaths, and the date of the end of the field work. Charles signed all the oaths for the whole Contract, and it is hard to know what role William played. Charles returned the next spring to finish the last two thirds of the Contract. There were ten townships all across the East side, and it was examined by David Kinnaird in 1902 and approved. Burt and Roy Campbell and Clyde Riddell were regular crewmen. He retraced many of the existing lines on fractional townships, whether instructed to or not.

Charles had his own Contract in 1902 in Oregon, for one townships on the Southern Coast, one near Grants Pass, and one in Baker County. He turned in the notes in 1903, and he was examined on all of them. It appears that the survey issues were resolved by 1904, and there were no correction surveys in the record. There was an investigation by Special Agent S. N. Stoner in 1907, and the maps had been withheld from filing since 1904. T5N R45E was released, but the others were still withheld, and not all were filed until 1909 for unknown reasons. It is unknown when Charles was paid.

Charles received WA Contract 594 by bid in 1903 mostly in the Northeast part of the state with one township Southeast of Dayton, and he surveyed it in the summer, during a school break. His brothers Roy and Rex were chainmen. He returned to the University of Oregon and graduated in 1904 with a B. S. in Civil Engineering. While there, Charles was a charter member of the local chapter of Kappa Sigma fraternity, along with Ivan Oakes. The notes for Contract 594 were corrected several times, and approved in 1905. Charles received Contract 250 in Idaho for 3 townships East of the Coeur d'Alene Reservation, and surveyed it in 1904-07. Charles resurveyed part of it in 1911, and that part was approved in 1912-13. The remainder apparently remained rejected, with the unapproved notes on file.

He was in Payson, AZ in 1905 and also worked as a chainman for Milton Germond on Contract 632 in 1906. Charles teamed up with John Penland for a Joint Contract in 1906, which was finally approved in 1908. He married Elsie M. Tong in Spokane in 1908, was a civil engineer there in 1910, helped his brother Roy on Oregon Contracts from 1908-10, helped his brother George on corrections near Yakima in 1910, and worked as a civil engineer in the shipyards in Bremerton in 1912. Charles died in 1917 at age 39, and his wife was living with her parents in Spokane in 1920, with three young children, the youngest less than 4 years old. See Oregon GLO Surveyors for the maintained version of this information.

**Campbell,
George Curtis**

1872-1947

USDS

Contract 196

1899

to

no more

The father of George Curtis, Samuel Learned Campbell, was born in Massachusetts and came to Oregon via the Oregon Trail in 1846 and 1849. He was the brother of William Brackett Campbell, the patriarch of the Wasco County Campbell family, and therefore the uncle and great uncle of several GLO surveyors. Sam was a trustee of the University of Oregon City in 1856, and the Clackamas County Surveyor from 1867-1881. Sam surveyed a GLO Contract at age 69 in Idaho in 1893 that was approved by the Idaho Surveyor General, but rejected by the Commissioner, and never finished. George was a chainman (compassman?) on that survey. George was the half-brother of Frank W. Campbell.

Born in Oregon, George moved with his family to Missouri at age 6. He moved around a lot, working as: a chainman for his father in Idaho in 1893; and a surveyor in Spokane in 1900 which is where he was when he surveyed his two contracts north of Republic. George received Contract 196 in Idaho in 1899 for one township and the meanders of Priest lake, surveying it in the same year. He was a civil engineer for the City of Seattle from 1900-10; a farmer in Latah County, Idaho in 1910; a shop checker in the Navy yard in Kitsap County in 1920; and a draftsman for the Osage Indian Agency in Pawhuska, Oklahoma from 1924 until he retired, while taking care of his aged mother.

An examination of his first Contract, number 569, of T37,38N R32E by M. P. McCoy in 1902 disclosed positional errors large enough to require him to resurvey all of the work. It took several versions of corrections of that work, and of the second contract, to receive approval some 5 years later. Two of his brothers and his father-in-law were part of the crew. He was tall and slender with brown eyes and dark brown hair.

**Campbell,
George
Raymond**

1874-1932

USDS

Contract 244 1903
to

Special Instructions 1905

Member ASCE. William Brackett Campbell was one of the patriarchs of the Campbell surveying family, along with his brother Samuel Learned Campbell. William B. was the father of USDS William Ellis Campbell, who was the father of U. S. Deputy Surveyors, George Raymond, Charles Lois, Roy Thomas and William A. Burt Campbell. They were also neighbors and nephews of Homer Angell. William E. Campbell and Roy Campbell were GLO Surveyors in Oregon only, and Roy Campbell worked as a direct employee after 1910. William Ellis had married the sister of Homer Angell, and everyone but William B. grew up at Fifteen-Mile Creek or Eight Mile Creek in Wasco County, OR.

George was born and raised in Wasco County, Oregon and graduated from the University of Oregon in 1901 with a B. S. in Civil Engineering. He had been a crewman for his father on three Contracts from 1891-97 and a crewman for Ed Sharp and Homer Angell in 1898 and 1900. Before he graduated, he surveyed two Oregon Joint Contracts with his father, William E Campbell in 1899 and 1900. One was North of Elgin, and the other was East of Springfield. They used Clyde Riddell, Homer Angell, Charles Campbell and Roy Campbell as crewmen, and both signed the oaths. He surveyed his next Contract right after graduation, East of John Day, using Charles Campbell as

Another was surveyed entirely within the Quinault Indian Reservation, and he used fellow University of Oregon students, and future GLO Surveyors, Alfred Geddes and Milton Germond, as chainmen. The rest of his 5 contracts between 1904 and 1907 were on the East side, and in partnership with Milton Germond, and sometimes Walter Long. For Contract 610, the crew included brothers Roy and Rex as chainmen, and fellow University of Oregon Student, and future GLO surveyor, George X. Riddell. Roy, Rex, and George Riddell also helped on Contract 614, along with future GLO Surveyor Nathan Hubbs.

George received three Contracts in Idaho from 1903-05, and used most of the same players as crewmen. Contract 632 on the Yakima Reservation in 1906 included Roy, Rex, and future GLO Surveyor Charles A. Slang as crewmen for the portion surveyed by George. An exam by Louis Dent resulted in field corrections for all three in 1907-08.

They were reexamined by Van Winkle, and George was back in the field in 1910. In 1922 they were seeking relief from Congress to get paid for part of the work. George was in Spokane as a civil engineer in 1910, in Olympia in the GLO office as a direct employee in 1918 and 1920, in Yakima as a civil engineer and fruit grower in 1925, and was surveying for the RR in 1930. He was named an Associate Member of ASCE in 1915 and died in Yakima in 1932. He was of medium build with brown eyes and dark hair. See OR GLO Surveyors for the maintained version of this information.

**Campbell,
Samuel L.**

1824-1902
USDS

Contract 151 1893
 to
no more



Samuel was born the son of Hector Campbell in Hampden County Massachusetts. His father taught school and had been a Member of the Legislature. He was the brother of William B. Campbell, and the father of Frank W. Campbell and George Curtis Campbell. Samuel graduated from the State Normal School and survived typhoid in 1843-44. His brother William's wife died, and Samuel and William left for Oregon in 1846, by train and boat to Independence, Missouri, and then across the Oregon Trail.

Samuel has written a detailed narrative of his trip. He made it to the Whitman Mission at Walla Walla, but William went ahead to Oregon to find some Claims. Samuel worked in the Whitman sawmill over the winter, less than a year before the massacre. William came back from Oregon in February, heading home, but Samuel persuaded him to return to Oregon. They filed two Claims near Forest Grove and built cabins. After posting the required notice, they headed home to Hampden County in September. They convinced their father and the rest of the family to return to Oregon with them in 1849, which was accomplished again over the Oregon Trail. They arrived in September of 1849 and settled in Milwaukie, with all filing Claims there. Their Claims at Forest Grove had been jumped because they were gone too long.

Samuel and William cut shingles, and Hector became the first school teacher. Samuel built the first hotel in Oregon City in 1849, married widow Amanda H. Matlock in 1851, and was elected Clackamas County Surveyor in 1852, continuing for 17 years. He was a chainman for his brother William in 1860 near Hermiston. Andrew Patterson received Contract 97 for seven townships near The Dalles in 1861, just as he left office as Chief Clerk. He used Samuel as compassman for all the work. Samuel was also the compassman for the corrections the same year, and for the corrections of the adjacent Contract of La Fayette Cartee. Samuel had gone to California for gold in 1852 and to Florence, Idaho for the same in 1862. William was hired as a Clerk in the Surveyor General's Office of Robert Preston, and kept at that for 6 years.

While Samuel was in Idaho, Amanda became seriously ill with TB, and died in 1864, leaving three sons. He then remarried to Sarah Jane Moffett Cox in 1864, a widow with one child, with this union producing another four children. For some reason, Samuel traded his farm on the Clackamas for a farm in Missouri, sight unseen. He returned to the West four years later by buying a farm three miles East of Moscow, Idaho, where he remained until he moved to Seattle in 1901.

While near Moscow, he cut wood, sold quarry rock, and was elected Latah County Surveyor in 1888. He had been doing private surveys since arriving. His son Frank asked for his help for two Contracts in Wallowa County, Oregon in 1884, and Samuel spent the summer there. Neither he or his son Herbert were mentioned in the notes. Samuel received Contract 151 in Idaho at age 69 in 1893 for twp townships North of the Palouse River. He used his nephew William A. B. Campbell and his son, George, as crewmen on the survey. It was approved by the Idaho Surveyor General, but after examination, it was rejected by the Commissioner and never finished. He died in Seattle at the home of his son, George, and left a 250+ page autobiography that can be found through interlibrary loan.

**Campbell,
William A.
Burt "Burt"**

1872-1930

USDS

Contract 248 (with 1904
George Raymond
Campbell)

to
no more

William Brackett Campbell was one of the patriarchs of the Campbell surveying family, along with his brother Samuel Learned Campbell. William B. was the father of USDS William Ellis Campbell, who was the father of U. S. Deputy Surveyors, George Raymond, Charles Lois, Roy Thomas and William A. Burt Campbell. They were also neighbors and nephews of Homer Angell. William E. Campbell and Roy Campbell were GLO Surveyors in Oregon only, and Roy Campbell worked as a direct employee after 1910. William Ellis married the sister of Homer Angell, and everyone but William B. grew up at Fifteen-Mile Creek or Eight Mile Creek in Wasco County, OR.

William A. Burt married school teacher Mary A. Crossen in Union County, Oregon in 1891, and they had a son that died as a baby in 1899. She died in 1905, and he remarried to Mary E. Dishbow in 1910. He was a civil engineer in 1900 in Wasco County and was listed as a trapper of predatory animals and a taxidermist until he died. From 1891 to 1901, he was an axman or chainman for his father, brother Charles and Ed Sharp on several Contracts. In 1893, he had gone to Idaho to be a chainman for his uncle Samuel Campbell.

His one Contract in Washington in 1907 was on the Colville Reservation, and was shared with Alfred Geddes and Nathan Hubbs, with each doing about one third of the work. He climbed Mt. Hood with his brother George sometime before 1896. William was of small build with brown eyes and black hair. The "A" in his name probably stands for "Austin", which would make him named for the inventor of the solar compass.

**Canfield,
Roswell
Clinton**

1854-1940

Rep

USDS

Contract 242

to

no more

1902

Born and raised in Ohio, Roswell was attending Oberlin College in the early 1870's. He went to Colorado in 1878 as a mining engineer, and was a surveyor in Gunnison in 1880. but later living in Buena Vista Colorado. He married Ellen Mahoney, and they moved to Washington State in 1886. He surveyed two townships near Mullen, Idaho in 1902 under Contract 242. They lived in Hermiston, Oregon, and Pullman and Colfax, Washington from 1904-28. He did preliminary surveys for the Palouse and Spokane Electric Railway in 1904. In 1920 and 1930, Rowell was an alfalfa farmer on newly irrigated land at Hermiston and was a officer in the Irrigation Association. They then retired to Modesto, California, where Roswell died in 1940.

**Caples, James
Watts**

1881-1919

Prog

USDS

HES

Special Instructions 1910

to

Special Instructions 1910

AA ID PLS. Member AIME. Born in Missouri, the son of a lawyer, James was still in school at age 19 in 1900. He graduated from the Missouri School of Mines in 1905, stayed to work at the school, and then went to Salmon, Idaho. James had worked on survey crews for railroads every summer while in school. He was a mining engineer in Salmon, Idaho in 1910 when he surveyed two HES surveys. In 1914, he was noted as a member of the engineering firm of Herndon, Caples and Lumbi. James ran for State Inspector of Mines in 1914 on the Progressive Ticket with unknown results. James married Elsie Flora Van Idour in Challis, Idaho in 1916, a teacher and college graduate. He continued as a mining engineer in Salmon in 1917 and in Leesburg, Idaho in 1918.

He was the superintendent of the Haynes Stellite Mine at Leesburg and the Cobalt Mine in Blackbird, Idaho in 1919 at age 38 when he committed suicide with a dose of cyanide, leaving a wife and two sons less than a year old. His lengthy note mentioned financial setbacks in the mine he owned, and his inability to cope. Elsie remarried in 1922 in Idaho and spent 52 years with her new husband. One son, James Watts Caples, Jr. went on to have a career as a surveyor and Forest Service Employee in Idaho.

**Carpenter,
Howard Brady**

1848-1917

USS

Special Instructions 1904

to

no more

Born in Illinois of Quaker parents, Howard was educated in the public schools and then a seminary in Prophetstown, Illinois. He taught school in Quaker Street, New York for two years before being taught surveying by an older Cousin, a civil engineer. He worked on RR projects in the Catskills and Pomeroy, Ohio before becoming chief engineer for a RR from Chicago to Illinois Valley. In 1874, Howard started as chief engineer in San Francisco on water supply, streets, cable car lines, and ferry landings. He continued in California until at least 1888.

Howard worked in Colorado and Wyoming as a mining engineer before turning to government surveying as U. S. Deputy Surveyor and a U. S. Surveyor in 1894-1907. His first Contract in Wyoming was by special Instructions in 1894 for the subdivisions of 19 townships. Howard surveyed Contract 266 in Wyoming in 1897 for three townships and at some time surveyed the 37th Parallel between Utah and Arizona, and Colorado and New Mexico. He was the original surveyor that set the 4-corners monument. Howard received Special Instructions in 1904 to survey the State Boundary between Idaho and Montana, defined by the watershed crest of the summit of the Bitterroot Range. This effort used four survey seasons with a 21 man crew, and he used J. Frank Warner as Transitman for the work, but ended with Murray H. Gilcrest at the end in 1906.

Howard retired in 1908 to a fruit farm in Meridian, Idaho and became a Director of the Nampa-Meridian Irrigation District, a Trustee of the Methodist Church, a member of the Meridian School Board, a founder of the Meridian Building and Loan Association, and Vice President of the First National Bank of Meridian. Howard died in Meridian in 1917 of typhoid.

**Carrell,
William**

Probably a fictitious person for the Benson Syndicate.
No person was in Idaho in 1880 by that name.

Comp

As compassman for 1882

John L. McCoy on

Contract 84.

to

no more

**Cartee,
LaFayette**

1823-1891

Dem

Rep

S G

USDS

Surveyor General 1866

to

Contract 78 (with 1879
John B. David)



Lafayette was born in New York, and graduated from St. Johns College, before becoming the Chair of the Mathematics Department. He came to Oregon City in 1849 via a short stay in California, and opened a surveying and engineering office. Soon he was a member of the Oregon Territorial Legislature in 1853 and Oregon Speaker of the House in 1854.

Cartee worked as a Deputy Surveyor from the start, beginning with Claim Contract 5 in 1853 with Ezra Fisher as a chainman. He used both Ezra Fisher and Lewis Van Vleet as chainmen on Claim Contract 9 in 1854. Contract 42 crossed the Columbia River to Washington in T1N R3E in 1854, and Ezra Fisher was the compassman. Ezra continued as compassman for another Contract in 1855 in Multnomah County.

Lafayette made a trip back to Pennsylvania in 1855 to get married to Mary Bell. He had a brief term as Chief Clerk for Surveyor General William Chapman in 1859. He began surveying again in 1860 with two Contracts, one near Hood River, and another in Umatilla County. His brother-in-law, Peter Bell, and Allen M. Thompson, the brother of David Thompson were chainmen. Later that year, Peter and Allen were promoted to compassmen for two more Contracts involving a township at Hood River, a township at Umatilla, and several townships South of Hood River. Democrat Surveyor General, William W. Chapman had to leave office in June of 1861 when he was replaced by strong Republican Bynon Pengra. He gave his departing Chief Clerk, Andrew Patterson a Contract for several townships from the Dalles to Rufus.

A few days later, he gave Democrat La Fayette Cartee another Contract in the same vicinity. Bynon took over as the Contracts were signed. When both turned their notes in in September, there must have been differences, because Bynon required field corrections for both, involving remeasurements and better corner monuments. Samuel L. Campbell was the Deputy Surveyor that made the corrections, working for both, and he had been the Compassman for Patterson. La Fayette promoted axman Josephus Tomkins to compassman part way through his Contract. That was La Fayette's last Contract, and he took the job as engineer for the Portage RR on the South side of the rapids at The Dalles and Celilo in 1862.

While he was away from home, his wife died in 1862, and his children were cared for by his wife's sister-in-law, Henrietta Bell, who was living in The Dalles at the time. They took the children to Boise in 1863 where Henrietta's brother was living. LaFayette followed and took up residence there, where they were all living in 1870, along with USDS Allen M. Thompson and Darius Baker. Lafayette built a sawmill in 1866 and became Idaho's first Surveyor General in 1866, serving through several political transitions until May, 1878. There was a gap from April, 1869 to March, 1870, where Edward Ruger was the Surveyor General. Family members and friends worked in his Office.

Two years after he left office, Lafayette was awarded a Joint Contract with John David for 14 townships in the Southeast corner of the State. Two had no oaths, and David surveyed the rest. While in Boise, Lafayette was well known for his horticultural skills and fruit trees. (biography) This is the maintained version of this information.

Cartee, Ross

1860-1943

Dr/Clerk

Clerk 1875
to

Clerk 1903



Born the son of LaFayette Cartee in Oregon, Ross moved to The Dalles in about 1862, where his father was the engineer of the Portage Railroad. His mother died there in 1862, and the whole family moved to Idaho in 1863, where a brother of his mother was located. At age 15, he was a part time Copying Clerk in the office of his father, Surveyor General LaFayette Cartee. He was promoted to a full time draftsman in 1877, but left when his father was replaced in 1877.

Sometime along the line, Ross attended two years of college, probably in engineering. Ross was a Clerk in Boise in the Assay Office in 1881 and went to Shoshone by 1883, when he was advertising a bank he had founded. It failed in 1884, and Ross ultimately went bankrupt in 1900 trying to pay the depositors. An angry depositor beat him up on the street in Shoshone in 1884. He had gone to Helena by 1887, but returned to Boise to marry Leona Hailey, the daughter of a U. S. Congressman. He published a map of Montana in 1889, and was advertising as an architect in Helena in 1893. He also advertised as a florist in that year also. Ross was noted as a civil engineer in Helena in 1897 when he was doing the government survey for the ceded portion of the Blackfoot Reservation.

The 1900 census listed him as an architect in Jefferson County, Montana. He was soon back in Boise, where he designed the Friedline Apartments. Surveyor General Eagleson hired him in 1907 to be a Clerk to check plats and draft a map of Idaho. Leona affiliated herself with the Idaho Historical Society and was soon named to the Board of Trustees. Her father had already been named Chief Librarian. She was in that position when her father, John Hailey, wrote the Volume on the History of Idaho in 1910. When John Hailey died in 1921, Ross' sister, Ella Cartee Reed, succeeded him.

Ross and Leona had moved to Utah by 1915, when their son Ross B. Jr., was killed in an auto accident while visiting there. He was a member of the faculty in the Zoology Department at the University of Idaho. Ross was an engineer in Oakland, California in 1920 and 1930, and Leona died there in 1933. Ross remarried to Harriett Belle Faye in Berkeley in 1838, and they were retired in Alameda in 1940. Ross died there in 1943, but is buried with Leona back in Boise.

**Cavanah,
Frank Patrick**

1835-1897

USDMS

Mineral Survey 1879
Contract 13

to

Mineral Survey 1885
Contract 15

Born in Canada, Frank moved with his family to New York when he was a boy, and he later apprenticed in an iron works in New York City. He eventually moved to North Carolina, where he worked in the gold mining industry. Frank served for the Confederacy in the War, ending with the rank of Major. Right after the war, he married Ruth Cheatham in North Carolina, but she died in 1872 at age 26, leaving three children. Frank apparently left his children in the care of others, and came to Idaho soon after, settling in the town of Atlanta in the Middle Boise Mining District. Beginning in 1879, he was a practicing U. S. Deputy Mineral Surveyor until at least 1883, living in Wood River, Hailey, and Rocky Bar. He was a member of the Idaho Constitutional Convention and for a number of years was the Director of the Insane Asylum.

**Chaney,
George O.**

1861-1917

SES

Special Instructions 1903

to

Special Instructions 1903

Born in Iowa, the son of a land surveyor, George was still in school in 1880. He was a civil engineer in Salt Lake City in 1900, living with his parents. The newspapers mentioned him as a surveyor doing a government survey near Austin, Nevada in 1902, and he was an examiner of Surveys in Idaho in 1903. In that position, George examined Contract 218 of Albert Oliver in 1903, and also subdivided Sections 1 & 12 of T37N R1E near Orofino under Special Instructions, also in 1903. George was named The Chief Assistant Engineer for Salt Lake City in 1906 and Salt Lake City Engineer in 1909, until the end of the year when he was replaced. It appears he never married, and died in Salt Lake in 1917 of heart disease.

**Chandler,
William P.**

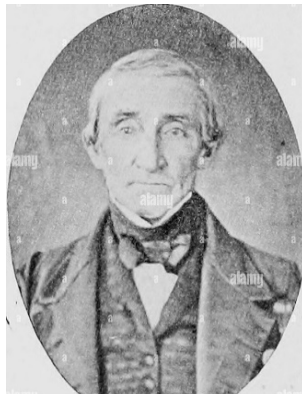
1820-1898

S G

Surveyor General 1878

to

no more



Born in New Hampshire, William was educated there in Salisbury Academy, New London Academy, and Penbrooke Academy, finishing as a civil engineer. He married Sarah E. Kimball in New Hampshire before moving to Danville, Illinois, where he was an engineer in the coal mining industry. In 1861 he enlisted as a Lt. Colonel in the 35th Illinois Regiment and served in the Civil War until 1864, being taken prisoner twice.

William was appointed Surveyor General of Idaho in 1878 by President Grant and occupied that position until the Grover Cleveland administration came into power in 1885. He was Surveyor General during the times of the Benson Syndicate in Idaho.

Chase, Dwight Day

1880-1939

Dr/Clerk

Clerk 1898

to

no more



Dwight D. Chase

Born in Idaho, the son of Eben Chase, a U. S. Marshal and also the inventor of the smokeless furnace. Dwight was appointed a Transcribing Clerk in the Surveyor General's Office of Joseph Perrault by 1898. He was listed as a government employee in 1900, living at home in Boise, and was still living at home in Boise in 1902. At some time, he became an active member of the Christian Science Church.

Dwight was in California after the 1906 quake, and met his future wife there. He married Laura A. Zerbe in 1916 in Alameda, California, a music teacher from New York. They were both "readers" in the Church. She died in 1917, and Dwight remarried to widow Aimee Brown Albright in July 1926. He was single in 1918 for the draft and in the 1920 Census in San Francisco. Dwight went to London in July, 1926 with Aimee as a Christian Science Monitor and returned in the fall. He was a Practitioner for the Church in Manhattan in 1930, where Aimee was the owner of the Concord Hotel. Dwight died in Manhattan in 1939 and was cremated at Ferncliff Crematory in New York.

Chinn, Joseph Philetus

1859-

Dr/Clerk

Clerk 1903

to

no more



Born in Missouri, the son of a farmer, Joseph was raised and educated in Missouri until 1879 when he married Millie J. Chapman. Their first child was born in Idaho the next year, and a son was born in 1891 in Idaho. He was the first uniformed police officer in Boise, serving as the first Police Chief in 1893.

Joseph was involved in four lawsuits in Boise from 1892-94. He was a Transcribing Clerk in the Surveyor General's Office of Joseph Perrault in 1898 and a grocery merchant in Boise in 1900. He moved to Seattle, where he was a grocery Merchant in 1910. Joseph worked in the shipyard in Seattle in 1920 and Millie died there in 1920. He was retired in Boise in 1930, moved back to Missouri by 1935, and died in Boise in 1936.

**Clark, Arthur
B.**

1869-1955

Rep

Mineral Surveys '1903

to

no more



WA PLS, PE 880. ID PLS 48. Born in Iowa, he was in Spokane as a surveyor in 1895. He surveyed 5 Mining Claims in Northeastern Washington from 1901-1903, and a RR from Pateros to Robinson up the Methow Valley in 1904. His first wife died in 1903, and he married for the second time in 1907. Arthur was noted as a farmer in Grant County in 1910, 1920 and 1930 and died in Soap Lake, WA, after doing three subdivision plats in Grant County in the 1930's and 40's. He served in the Washington State House of Representatives in 1925 from Grant County.

**Clark, Joseph
Addison
"Addison"**

1837-1905

USDS

Contract 114 1886

to

Special Instructions 1903



ID PLS 16. Born in North Carolina the son of a farmer, Joseph was one of the first two graduates of Earlham College in 1862. His whole family had moved to Indiana by 1863, and Joseph married Eunice Hadley there in 1866, siring seven children.

He continued farming in Indiana, until moving to Idaho Falls by 1886. At that time he received Contract 114 for 13 widely scattered townships near Rexburg. Commissioner Sparks voided the Contract because there was no evidence of agricultural value. Joseph received Contract 118 for partial boundaries of the Lemhi and Nez Perce Reservation in 1887. The Nez Perce Reservation survey was rejected, although there are notes on file. Joseph was listed as a surveyor in Idaho Falls in 1900, and was awarded his last Contract in 1903 by Special Instructions for one township just West of Rexburg.

He was the first Mayor of Idaho Falls after its charter and surveyed and designed irrigation canals near Idaho Falls. He died in Idaho in 1905. His son, Chase Clark, became Governor of Idaho and the Chief Judge on the U. S. District Court in Idaho. Another son, Barzilla Clark, was also a Governor of Idaho, and a grandson, David Worth Clark, became a two-term U. S. Congressman and a U. S. Senator from Idaho.

Clarke, Roy

Hughes

1869-1943

USDMS

Mineral Surveys 1900

to

no more



1894

Born in New York, he moved with his family to Ohio in 1880 and later to Spokane in the 1880s. Roy graduated in Mining Engineering from the University of California at Berkley in 1894. While there he played tenor sax in the Military Band in 1893. His father was City Commissioner of Spokane in 1900 while Roy was living at home and working as a mining engineer.

Roy was in Kellogg, ID. in 1910 and Mount Hamilton, CA in 1920. In 1935 he was elected as President of the Northwest Mining Association. He died in Kellogg, ID in 1943 the result of a 30 foot fall while inspecting a mine. Roy surveyed 78 Mining Claims in Northeastern Washington between 1902 and 1916, plus many more in Idaho. His papers are on file at the Eastern Washington State Historical Society.

Clarke,

William

Higgins

1859-1935

USDS

Contract 202 (with 1899

James W.

to

no more

Born in Illinois, the son of a teamster, William was living with his family in Cook County, Illinois in 1870. By 1880 they had moved to a farm in Wisconsin, where William was a farmer. William married Florence M. Hewitt in his Wisconsin home town of Gratiot in 1893, and they had several children. He was in Moscow, Idaho in 1896 as a merchant and active in the Populist Party. He moved to Grangeville in early 1899 and formed a business partnership with Idaho County Surveyor, James W. Shannon, mostly in Real Estate. Later that year they were awarded a Joint Contract for four townships East and North of Grangeville. They were surveyed by both in 1899, examined by Frank Brigham in 1900-1901, and suspended in 1903.

After failing the order to hire a compassman, they were rejected. Sonnenkalb and Turley eventually surveyed them in 1906. William moved to Whatcom, Washington in 1903 for what he saw was a better business environment. He was a laborer in odd jobs in 1910, a clerk in 1911, and retired in 1930.

Cohen, Dave J.

1866-1946

Dr/Clerk

Clerk

to

no more

1895

Born in California, David attended grade school only and married Gussie Goldstone in 1888. He worked as a bookkeeper in Boise in 1891 was appointed a Transcribing Clerk in the Surveyor General's Office of Joseph Straughan in 1895, continuing until 1897, and then a bookkeeper in Boise in 1900. The Clerks in the Surveyor General's Office sued the GLO for Civil Service infractions and David was awarded back salary of \$578 in 1904. David was noted as a retail clothier in 1910, also in Boise. David moved to San Francisco by 1920, where he was a credit manager for a retail store in 1930 and unemployed, living alone in the Fairfax Hotel in 1940.

**Cohn,
Mathilda, Miss
"Mattie"**

1870-1948

Dr/Clerk

Clerk

to

no more

1892

Born in Idaho, the daughter of a German immigrant tailor, Mattie lived in Boise all her life. She graduated from High School and attended Eastman College in New York. By 1892, Mattie was listed as "Mattie Cohn", stenographer, in the Boise Directory and was listed in the 1892 Register as a Stenographer and Typist in the Surveyor General's Office of Willis H. Pettit in Boise. She married merchant William Stark in 1894, and they had one daughter, Marion Stark, in 1896. William owned the Falk Mercantile Co. in Boise in 1936, and died in Boise in 1940. Mattie died there in 1948.

Cole, Harry B.

USDS
 Special Instructions 1909
 to
 no more

ID PLS 191. Member Idaho Society. of Engineers. Harry B. Cole surveyed an island in the Snake River under Special Instructions in 1909 just Southeast of Boise. One candidate was Harry J. Cole, a surveyor on the 1910 census in Boise that was a surveyor for irrigation. He later was listed as a government surveyor. His signature on his draft registration does not match the signature on the survey. Both Harry J. and Harry B. Cole were licensed surveyors in Boise in 1910 and 1914. Another candidate was Harry B. Cole, a stock broker in Utah specializing in mining stock, but he never appears in Idaho. A third candidate was Harry Bullock Cole, a farmer at Leland in Nez Perce County, who never left the farm and also has a signature that does not match. It appears that H. B. Cole, the surveyor, never left his tracks in the Idaho Census.. The search will continue.

Collard, Isaac**Newton**

1848-1929

USDS

Contract 27

1871

to
 no more

Born in Oregon, the son of a blacksmith, Isaac's family resided in Washington County in 1850 and Clackamas County in 1860. At some time, he had participated in the survey of the Oregon-Idaho State Line. He was noted as the last of the Indian scouts and an interpreter. Isaac was an axman for Henry Meldrum East of Gresham, Oregon in 1869 and was a chainman for Samuel Campbell in Idaho in 1871. He received Contract 27 in Idaho in 1871 for 12 townships on the Oregon border South of Coeur d'Alene and used Henry Meldrum as a chainman on one crew.

Henry was then a chainman for John Meldrum in Eastern Oregon in 1874 and 1875. He married Jane A Rogers in Yamhill in 1877, and they had five children. By 1900, Isaac was in Fairlawn in Yamhill County, retired in Yamhill County in 1920, and died there in 1929.

Collier, Henry**Latimer**

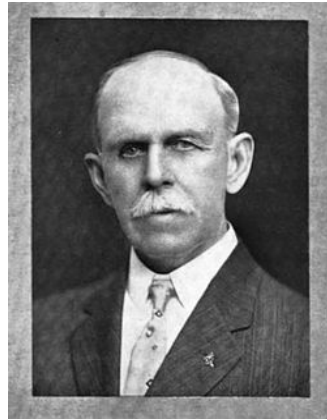
1853-1925

SES

Special Instructions 1894

to

Special Instructions 1894



Born the son of a Judge, Henry graduated from the University of Georgia in 1872 in civil engineering. From then until 1889, he was a surveyor and engineer for railroads in the Southeast, working up to Chief Engineer of the Atlanta and Florida RR. He was then engaged in contracting and granite quarries until 1892, when he was appointed an Examiner of Surveys in several states in the West from 1893-98, performing 21 examinations in Oregon in 1893-94 and 6 exams in Idaho in 1894.

One of his tasks was to examine the corrections of the Benson surveyors after they did the corrections promised in the great compromise in 1894. They never did the corrections, but Henry was dismissed for taking too long to approve the surveys. The Benson surveys were approved, and they were paid the money due them for the fraudulent surveys. He returned to railroads in 1898 as Chief Engineer for the Tifton and Moultrie RR in Georgia, and then the Georgia and Florida RR. He was appointed a Commissioner of Public Works in Atlanta in 1901, and consulting engineer for the Yellow Pine Manufacturing Association in 1911.

**Collier, Robert
Edward Lee**

1862-1930
 USDMS
 Mineral Surveys 1902

 to
 no more



Born in Alabama, Robert graduated from the Alabama Polytechnic Institute and then went to work for the Great Northern RR in Montana. He moved to Utah in the early 90's and became construction engineer for the Denver and Rio Grande RR, building the Sanpete branch. Robert married Estelle Viola Rogers in Utah in May 1891, who would at some time get the political plumb of the first woman to get the job of U. S. Customs Inspector, being appointed by Woodrow Wilson.

Robert was then associated with the Utah Copper Co. when their first mill was built. He was a civil engineer, surveyor, or mining engineer in Salt Lake City from at least 1900-1930 when he died there after a six week illness at age 50.

**Connor,
Patrick
Edward Jr.**

1866-1916
 USDS
 Contract 150 (with 1893
 James M. Porter)

 to
 no more

Born in Utah, Patrick was living with his mother in California in 1873-80 as a student at Santa Clara College. He was nominated by a Congressman and accepted at West Point in 1883. but could not pass the physical exam.. His father was General Patrick E. Connor, who was best known for the Bear Creek Massacre in Shoshone County, Idaho in 1863, where over 240 Indians were killed. After his military service, he went on to become an important figure in mining in Nevada and Utah. When he died, he was called the "Father of Mining in Utah."

Peter Jr., received a Joint Contract with James M. Porter in 1892 for 9 townships in North Central Idaho, and they both signed the final oaths. Patrick married Annie May Scott in 1896 and was a civil or mining engineer in Salt Lake City. He worked in the City Engineer's Office for 20 years and was known as an excellent draftsman. Patrick died in 1916 of heart disease at age 50, and Annie died the year before.

**Conrad
Charles
Frederick**

1844-1911

Dem

Special Instructions 1888

to

Special Instructions 1888

Born in Virginia the son of the Attorney General of Confederate Virginia, Charles attended Winchester Academy and enlisted in the Confederate Army, bringing his own horse. He served for 7 months until he was severely wounded, and his horse was killed. He returned to duty several months later. He was on the list of POW's discharged at Winchester in 1865. Charles attended the Virginia Military Institute in engineering, Class of 1865, for one year either before or after the war, and was the engineer for the layout of the Lehigh to New York Railroad. Charles married Mary Louisa Grant in South Carolina in 1874, and they had two children. At some time, after the war, Charles assisted in opening the coal fields in Alabama. Mary died in

Grover Cleveland was elected the Democrat President of the United States in 1884, ending a run of Republican Presidents for 16 years. Charles' brother Holmes was named the U. S. Solicitor General in Washington, D. C., and about that time Charles was appointed a Special Examiner of Surveys. One of the tasks given him was to investigate John A. Benson and all the members of the Benson Syndicate. He began with George Perrin and went at it with enthusiasm, declining probable bribes to quit.

From 1886-1889, Charles interviewed nearly all of the potential Benson men. Some like Charles Holcomb, freely talked about what they did, but Holcomb said he never had a Contract, but had signed some blank oaths for Benson to use as he saw fit. He explained the procedures used by Benson was to do a little skeleton surveying to furnish the topog., and to set a few corners for the settlers to see. The notes as such were turned over to Benson to use to create a full set in the office in San Francisco. On one occasion, while interviewing George Perrin, Conrad showed him the bond given by a Perrin friend to guarantee the Contract. Perrin put it in his pocket, refused to return it, and gave it to his friend after the meeting.

Grover Cleveland was not elected in 1888, and a new Republican President took over in 1889 in January. This brought back many of Benson's friends to office. The first trial was set in early 1889, and on the eve of the trial, Conrad was dismissed by the new Secretary of the Interior, telling him to turn over all of his papers to the California Surveyor General. He was not going to be used to testify against Benson. The trial was a mess, with a Benson ally doing the prosecution without Conrad.. He told his staff ahead of time, "We do not really want a conviction." They did not get a conviction, and the government had to regroup.

Conroy, Thomas
 1827-1920
 Dr/Clerk
 Clerk 1869
 to
 no more

Born in Ireland, Thomas was a messenger in the Surveyor General's Office of Edward Ruger, Lafayette Cartee and William Chandler from 1869-81. He was farm laborer in Ada County, Idaho in 1870 and was lodging with Nelson Kimball and Theopolis Randall in Boise in 1880 as a laborer. Thomas was appointed as the gardner of the Courthouse grounds in 1903 and kept that position for many years. Thomas was a yardman in Boise in 1910 and continued in Boise until he died there in 1920, never having married

Craigue, William Horace
 1869-1943
 USDMS
 Mineral Surveys 1902
 to
 no more

Born in Kansas the son of a grocer, William was living at home in Colorado Springs, Colorado in 1880. He was a USDM in Colorado Springs, Colorado in 1887. He graduated from the Colorado School of Mines in 1889 and married Pearl Baird Austin in Golden, Colorado in 1890. They moved to Cripple Creek and had two children before divorcing in 1902. It was noted in Pearl's obituary in 1939 that William had died in 1902, but in that year William married Eljiva Virginia Sherman in Salt Lake City. Pearl continued in Cripple Creek, but then went to New York to study art. William was an assayer in Teller, Colorado in 1900 and a USDM in Salmon, Idaho in 1902.

William surveyed a Placer Claim near Salmon, Idaho in 1903 and went on to survey 13 more Mineral Surveys near Salmon from 1904-1906. William retired as Lemhi County Surveyor in 1907 and was living with his wife and her mother in Nye, Nevada in 1910, where he was a mining engineer. He was a civil engineer in private practice in Washington D, C. in 1920 and a mining engineer for the U. S. Government there in 1930 and 1935. William co-authored a book, "Principles of Valuation," with two Treasury Department Engineers in 1923. Eljiva was enjoying the Bureau of Mines social circle. William was retired in Los Angeles in 1940 and died there in 1943.

Cram, Daniel*1817-1886*

Dr/Clerk

Draftsman

1869

to

no more

Born in New Hampshire, Daniel had a wife and five children in Boston in 1850. He was appointed the combined job of Territorial Treasurer and Superintendent of Public Instruction in 1867, and in 1869 he was appointed a Draftsman in the Surveyor General's Office of Lafayette Cartee, serving until at least 1873. In 1872 he paid \$500 to be appointed Territorial Controller by Governor T. W. Bennett. He continued in that role until 1873, when he refused to pay another \$300 bribe to Territorial Governor Bennett to keep his job, and quit .

Late in 1873, a Grand Jury was convened to deal with a \$537 withdrawal of public funds by Daniel, but no indictment was issued. Daniel was in San Francisco in 1880, noted as still married, working as a night watchman. He died in San Francisco in 1886 and was buried in Odd Fellows Cemetery there, but later moved to Greenhorn Memorial Park in Colma.

**Crumly,
Harvey
Derbyshire***1868-1960*

USDS

Contract 329

1910

to

no more

Harvey was born in Iowa, the son of a County Surveyor, and graduated from Penn College in 1895. He was the principal of Havilland Academy in Kansas for three years, with his soon-to-be wife Olive Folger as assistant, and while there became an ordained Quaker minister. From 1898 until at least 1905 he lived on a fruit ranch in Colorado and practiced his ministry. From 1908-1911, he was in Washington surveying Contracts 668 & 669, and in Idaho in 1910 surveying Contract 329 for 13 townships. He left seven of them unsurveyed, and was part of Group 10 in the Direct System while in Washington in 1911. By 1920 he was back in Grand Junction, CO on his farm. Harvey moved to California sometime after 1930, and died in Los Angeles. (biography)

Custer, Henry

1827-1889

USS

Topog

Special Instructions 1857

to

no more

Born in Switzerland, Henry came to the the United States In 1849 and settled in California. He joined the Northwest Boundary Commission survey and began the initial reconnaissance of the Skagit River Basin and Whatcom Pass to facilitate access for the astronomeers. Henry climbed some 20 peaks in a short time to get better visibility, logging many initial ascents. Henry served the rest of his time until 1861 as a topographer. He returned to Washington D. C. and married Margaret Agnes Faherty in 1877. Henry secured a passport in 1887 to return to Switzerland and died there in 1889. He is the namesake of Custer Peak in Glacier National Park.

Darby, Thomas**Lilly**

1850-1924

USDMS

Mineral Surveys 1902

to

no more



Member AIME. Born in Kentucky, Thomas left Kentucky in 1868 and spent the next 52 years working out of Denver, with a period of residence in Leadville, Colorado. He was a U. S. Deputy Mineral Surveyor, Geologist, and Metallurgist, and spent some time on consulting engineering in irrigation and railroads. In 1877-78, he was in the Colorado Surveyor General's Office as a Clerk and Civil Engineer.

Thomas was appointed a USDMS in Idaho in 1902, but never finaied a survey. He was particularly involved with the Denver and Rio Grande RR. Because of poor health, Thomas left Denver in 1920 and returned to Kentucky, where he lived with a niece until he died in 1924. He never married.

**Darlington,
Edward
Brinton**

1873-1941

USDMS

Mineral Surveys 1901

to

Mineral Surveys 1902



ID PLS. Member ASCE. Born in Pennsylvania, the son of a railroad clerk, Edward attended college for one year before coming to Boise, Idaho in 1893 and married Mabel Rebecca Dratz in 1899, a home town girl from Pennsylvania. He was bonded as a U. S. Deputy Mineral Surveyor there in 1901 before surveying five Mineral Surveys near Boise in 1902. Edward lived in Boise until at least 1908.

In 1907 Edward was commissioned by the State to survey the entire valley near Twin Falls/Idaho Falls, and accomplished it with a 20 man crew. (At a cost of about \$0.05 per acre) Edward was in charge of the State Wagon road up the Boise River to Atlanta in 1906. He was in Hollister in 1911-16 as the Water Master of the Salmon River Reclamation Project and in Jerome as the Chief Engineer of the Twin Falls North Side Land and Water Company in 1918-20. From 1923-35, he was a Member of the Committee of Nine, an advisory board for the operation of Snake River irrigation projects.

At that time, Edward was also the superintendent of the Bureau of Reclamation Minidoka Irrigation Project, containing 60,000 acres. Edward worked as a superintendent for the Bureau of Reclamation at Burley in 1930 and 1935 and retired in 1935 to Santa Monica, where he died in 1941. The Secretary of State appointed him as a Member of the State Board of Engineering Examiners in 1920. Edward was tall with light blue eyes and light red hair.

**Darrah,
Charles John**

1835-1871

Astr

Special 1859
Instrucrtions

to

no more



Born in Sri Lanka, the son of a soldier, Charles graduated from the royal Military Academy and was commissioned in the Royal Engineers in 1854, and was commissioned as a First Lieutenant at the same time. Charles served at the siege of Sebastopol in 1855 and then was employed on the British Northwest Boundary Commission as the Assistant Astronomer and Surveyor in 1858 for the survey of the North Boundary of Washington, Idaho and Montana.

Together with Robert W. Haig, he was responsible with the observations of Latitude and Longitude along the border from 1858-1962. Charles was promoted to Major in 1858 and was later employed on the construction of the Abyssinnia RW after leaving the Boundary Commission. He died in Bombay in 1871.

**David, John
Benton**

1841-1908

Comp

Contract 17 (as 1869
compassman for
David P.

Thompson for

to

Contract 104 1884



Born in Illinois, John moved with his family to Wisconsin in 1847, where his father was a prosperous merchant and farmer. He attended Lawrence University of Wisconsin for an unknown time. His father formed a Company for the Civil War, and was named Captain. John was a Sergeant in the Wisconsin Infantry from 1861-64, and was part of the Iron Brigade. He fought at Bull Run, Antietam, Fredericksburg, South Manassas, Gettysburg, South Mountain, Gainesville, and Blackburn Ford.

He was wounded and captured at Gettysburg, and was held at Belle Island and Andersonville for 18 months. After the war, John came to Oregon City with his father and brothers in 1867 over the Oregon Trail. He was a compassman for David Thompson in 1867 for five townships South of Boardman on Joint Contract 122. That was followed up by seven townships as compassman, again for David Thompson, on Joint Contract 124 Southwest of Bend. He married Mary Etta Wright in Oregon City in December of 1868. John received Contract 126 on his own in early 1869 for five townships at Oakridge, and used surveyors William Pengra and George Newman as

John was awarded Joint Contract 131 with David Thompson and Bynon Pengra in June, 1869, and his share was 20 townships and 96 miles of Standard Parallel, with part East of Boardman, and part West of John Day. He used George W. Newman as compassman. While he was on this Contract, Etta died after childbirth in September. John remarried to Juliette Saffarrans in 1871, and they had five children. John was a compassman for David Thompson in Idaho in 1870 on the Fort Hall Reservation survey, and surveyed a small Contract on his own in 1871 in Wasco County.

John continued surveying in Idaho as a Deputy Surveyor from 1870 until at least 1884, with 24 Contracts involving approximately 418 townships. Along with Wilson Bell and Allan Thompson, John pretty well dominated the Contracts in Idaho for the first 15 years. On one in 1880, he continued the Boise Meridian North from the Clearwater River, somehow creating a 20+ chain error in the Meridian. On his last two Contracts, he used Hezekiah Johnson as the compassman. John and his family were listed in the Oregon City, Oregon Census in 1880, with John as a Surveyor. He also had at least one Contract in Utah in the early 80's. His last Contract in 1884 was just before Commissioner Sparks imposed the severe reforms to the Contract System.

While surveying in Idaho, he consistently used a three man crew except where the Manual required more. He maintained his relationship with David Thompson and became a contractor to build the OR&N Railroad from Pendleton to Huntington, and later was also the contractor for the jetty at the mouth of the Columbia River. He bought a 347 acre farm two miles North of Spring Brook, near Newberg and was a delegate to the Republican National Convention in 1876. In 1888 John and two others built the Portland and Vancouver Railway, a narrow gauge RR from East Portland, through Albina, to the ferry dock across from Vancouver. They sold it in 1892.

John returned to GLO work in Oregon in 1898 to survey Joint Contract 684 with Hezekiah Johnson for four townships South of Boardman. Next came Joint Contract 697 with Harold Rands in 1899 for eight townships Southwest of Ontario. Both were examined but there does not appear to be any corrections in the field in the record. He was a farmer with his family in Newberg, Oregon in 1900. John was 6 feet two inches tall and of sturdy stature. He was living in a room on Second Street in Oregon City when he died in 1898. John is buried in an unmarked grave in Oregon City.

Denison, Charles Simeon

1849-1913

Astr

USDS

Special Instructions 1873

(with Rollin J.

Reeves and Ezra L.

Smith) (6/6/1873)

to

no more



Charles was born in Gambier, Ohio, the site of Kenyon College. His father spent three years at Dartmouth and then graduated from Kenyon in 1829, and after taking graduate work at Yale, became Professor of Mathematics and Natural Philosophy at Kenyon. In 1853 his father took the position of head of St. John's Church, Keokuk, Iowa. After his father died in 1861, his mother returned to their former residence in Lockport, New York, where Charles was prepared for the classical collegiate course.

He worked part time as a surveyor before entering the old Military School of Norwich. After a year, Charles transferred to the University of Vermont and after three years, received the degree of B. S. in Civil Engineering in 1871, with the highest rank ever. He worked the winter of 1871-1872 on a RR survey, and in April 1872 was appointed an instructor of engineering and drawing at the University of Michigan. The summer and fall of 1873 were spent as the astronomer for the Washington/Idaho Boundary Survey with Rollin J. Reeves and Ezra L. Smith. The survey finished in heavy and deep snow, and food consisted of flour only for the last three weeks.

Charles progressed over the years at the University of Michigan, becoming an Assistant Professor in 1882, chair of a department and a professorship in 1885, and in 1888 took a sabbatical to travel Europe for several months. In 1901 he was named Professor of Steriotomy, Mechanism and Drawing by the Board of Regents, which title he held until his death in 1913. He is the namesake of the Denison Archway in the West Engineering Building at the University of Michigan.

Dent, Louis Lee

1871-1950

SES

Special Instructions 1897

to

no more



Born on the Dent farm in Dent County, Missouri, Louis went on to graduate from Harvard University in 1893 with degrees in Law and Civil Engineering. He was a practicing attorney in Chicago for his entire career, except for at least two periods where he had a Contract as a Special Examiner of Surveys. One was before 1898 in Colorado, Idaho and Wyoming, and the other was in at least Washington State in 1909.

In 1898 he was a Professor of Law at Northwestern University and published a book, "Federal Control over Interstate Commerce." In 1929 and 1933, he was president of his village of Riverside, Ill. In the 1930's and 40's Louis appeared several times at the appellate level of court. He was 6' 3" tall.

Dickert, Ferdinand

1861-1907

USDMS

Mineral Surveys 1878

to

no more



Born in Germany, Ferdinand came to the U. S. in 1867 and married in Utah to Fanny Parsons in 1875. She was an adopted child and died after four children in 1882 at age 25 of complications from her recent childbirth. Ferdinand surveyed two Sulphur Mineral Claims that he owned in Idaho in 1878. He was a mining engineer in Salt Lake in 1880 and remarried to Wilma Faber du Faur in Utah in 1886. They had one child in 1888, and Ferdinand was a mine manager in Montana in 1900.

**Diehl, Leonard
George**

1881-1856

USDS

Contract 275 1906

to

Contract 302 1908



1956

Born in Massachusetts the son of a merchant, Leonard graduated cum laude from Amherst in 1905, where he was also outstanding at football. He came to Idaho after school and was a chainman for William D. Bush in 1905 before receiving a Contract for three townships on the Boise River in 1906. USDS George W. Fendley was a chainman for most of the work. Leonard partnered with Albinus Kimmell in 1907 for 14 townships in the Boise Valley North of Jerome. His last Contract was on his own in 1908 for two townships on the Snake River East of Mountain Home.

Leonard was living as a real estate agent in Kings Hill in 1910. His School Directory noted he was a surveyor in Kings Hill in 1911, apparently after he joined the Direct System. Between 1911 and 1914, he worked in Idaho, Oregon, and Montana. for the GLO. When he left, Leonard started as a salesman for the Butte Miner, working up to General Manager. He married Alyce B. Monnier in Montana in 1912, and they had two children by 1920, but divorced by 1930. Leonard remarried to Irene G. Begley in Spokane in 1930. He purchased the Everett News in 1931 and closed it in 1937, and while there, his only son drowned in Puget Sound. Leonard then became General Manager of the Ogden Standard-Examiner and ran it until he retired after 1954.

**Diers, John
Henry
"Henry"**

1859-1928

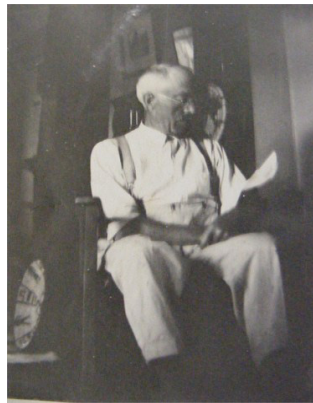
USDS

HES

Special Instructions 1910

to

Special Instructions 1910



ID PLS. Born in Germany, John came to the U. S. in 1882 and was naturalized by 1900 when he was a florist in Sullivan, Illinois. There was a J. H. Diers as City Engineer of Skagway, Alaska in 1900. John had been married to Susan Jane Robbins in Illinois in 1888, who already had two children, , and they had six more children by 1900 for a total of eleven by 1913.

John moved to MacKay, Idaho by 1907, where he became a PLS in about 1908 and surveyed a Homestead Entry Claim in the Sawtooth National Forest in 1910. He surveyed another Claim in the Lemhi National Forest in 1911. John and Susan moved to Boise for better help for Susan's health, and she died there in 1920. He worked as a bookkeeper in Boise in 1920, and remarried to Margaret Anne MacPhadyen in 1924. John died in Boise of a heart attack in 1928.

Dike, James E.

1852-1899

Dem

Contract 144 (with 1892

Amos D.

to

no more

Born the son of a farmer, James was listed as a Farm Hand at home in 1870. He was attending Fryeburg Academy in 1871 and graduated as a civil engineer from Maine State College of Agriculture in 1876, the predecessor of the University of Maine. He was Clerk to the Water Board in Kansas City in 1879 and moved to Fargo, North Dakota by 1880, where he was listed as a U. S. Surveyor. From 1882-85, he was a U. S. Deputy Surveyor in Grand Forks, North Dakota, and hired out to help settlers find some land.

James married Zelma Jane Chapman in Maine in 1884. She was listed as entertaining with her voice while there and ran ads advertising vocal instruction. Along with his surveying, James was a grain dealer from at least 1887-88 in Grand Forks. James was appointed the City Engineer of Devils Lake, North Dakota in 1888. He continued as City Engineer and County Surveyor there until 1890, when he was a civil engineer in Post Falls, Idaho and then a civil engineer for the GNRR in Davenport, Washington. James received a Joint Contract for 24 townships North of Coeur d'Alene, Idaho with Amos Robinson in 1891. They appear to have shared the work and mostly both signed the oaths. They were examined and had to return in 1893 for some corrections, receiving approval in 1896. James and Zelma were back in Orono, Maine in 1897, and James died there in 1899 of kidney disease.

**Donaldson,
Thomas
Corwin**

1843-1898

Rep

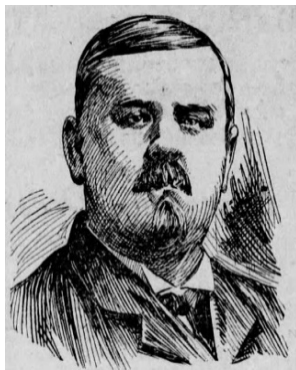
Dr/Clerk

Clerk

1874

to

no more



Born in Ohio as the son of the Mayor of Columbus, Thomas graduated from Capital University in Columbus before he enlisted in the Union Army in 1862.. He was wounded and forced out of the army, only to return under an alias and finish the war in 1865, ending as a Lieutenant. . Thomas then studied law and passed the bar in 1867.

Thomas married Mary J. Gormley in 1868 and in 1869 was appointed as the Registrar in the Idaho Land Office. The 1870 census showed him as an attorney at law, living in Boise in the house between Surveyor General, Lafayette Cartee and the Chief Clerk William P. Thompson. Thomas was a Transcribing Clerk in the Surveyor General's Office of Lafayette Cartee for a few months a year between 1873-75. At about the same time, he was a Clerk in the U. S. Court in Boise and superintended the construction of the State prison at Boise. Thomas was a Colonel in the Idaho Territorial Militia, a declined when offered the position of Governor of Idaho by his close friend, President Rutherford Hayes. He was a delegate to every Republican National Convention from 1868-86.

Thomas was an author and collector. He was the author of: *The Public Domain, Its History with Statistics*, 1884 (eight years and 2000 pages); *The George Cotter Indian Gallery in the national Museum*, 1887 (four years); *Walt Whitman, the Man*, 1896; *The House in which Thomas Jefferson wrote the Declaration of Independence*, 1898; *Some of the People I h]=Have Met*, 1898; and *Experiences in Idaho Territory*, 1898.

As a collector, his collection was not excelled by any private collections, and very few museums. His pictures contains works by two dozen contemporary artists. His collection of autographs and letters was unrivaled. The Indian collection includes pottery of the extinct mound builders, pipes, head-dresses and horse equipment from nearly every tribe of the American Indians. There is: Garfield's Chair from the White House; Lincoln's parlor furniture; General Grant's chair; Thaddeus Stevens snuff box; General Sherman's sword and a bit from his favorite horse; Henry Irving's sword from "Hamlet"; Walt Whitman's chair and cane; Chief Brandt's tomahawk used in Wyoming massacre; Salvini's shoes worn in Othello; Sara Bernhardt's handkerchief and the earliest edition of Martin Luther's Bible.

In the years 1890-93, Thomas was in charge of the Indian portion of the 1890 census. He acquired about 1500 photographs to illustrate his report "The Deport on Indians Taxed and Not Taxed in the United States". Thomas continued in Philadelphia, until he died there in 1898 at age 55 . "Mr. Donaldson's home has been the resort of the foremost men of the stage, politics, pulpit, art and daily life" (obit)

**Dunniway,
Robert M.**

1849-1873

Comp

Contact 36 (as 1872
compassmen for
David P.

Thompson for
to

no more



Born in Illinois, Robert came to Oregon with his family in 1852 over the Oregon Trail. His mother died on the way of cholera and they settled near Needy, Oregon just South of Canby. His father died in 1856, and Robert was raised by a married sister near Molalla, Oregon. Robert began working for John Meldrum as an axeman in 1868 in Clackamas County, and continued through nine assignments for various Surveyors until 1870, when he was promoted to chainman for David Thompson.

Robert then worked at that for David Thompson and John Melsrum until 1872 when he followed them to Idaho, where he was named a compassman for David Thompson on the Coeur d'Alene Indian Reservtion. Robert returned to Salem where he died on February 5, 1873 at age 24, 3 months after he signed his final oath in Idaho.

**Eagleson,
Benjamin
Clyde "Clyde"**

1878-1956

Dr/Clerk

Clerk

to

no more

1903

Born in Iowa, Clyde graduated from high school and remained there until 1900, when he was an agent for a broom factory. He married Laeta Jaques in Weber, Idaho in 1901 and was appointed a Clerk in 1903 in the Surveyor General's Office of his cousin, Ern Eagleson. He lived in Boise the rest of his life, being noted as married and a cashier in a bank in 1910. By 1918, Clyde was a deputy clerk in the court house, and was at least separated from Laita. In 1920 Clyde and Laeta were noted as divorced and he was still a deputy clerk in district court.

Clyde remarried to Laura Minerva Kulow Ruggles in Boise in 1922. He continued as a deputy clerk until at least 1940, and died in Boise in 1956. Apparently Clyde and Laeta purchased 160 acres of timberland by Cash Sale in 1903-04 North of the Boise River from the Federal Government via the Timber and Stone Act. The ultimate owner, the Barber Lumber Company was in the Ninth District Court in San Francisco over the title in 1903 in a case involving fraudulent conspiracy to purchase government lands.

**Eagleson,
Ernest George
"Ern"**

1864-1956

Rep

S G

Surveyor General 1902

to

no more



ID PLS 137. ID PE 53. Born in Cadiz, Ohio, Ernest moved with his family to Iowa in 1871, and later to Nebraska. He graduated from the University of Nebraska in Engineering in 1889. After school he was employed in RR construction as an engineer for the Burlington RW and then by Union Pacific Coal Company of Wyoming.. Ern was appointed City Engineer of Boise in 1893 and served less than continuously for eight years.

Ern served one term as Ada County Surveyor. He was appointed Surveyor General of Idaho in 1902-08, and appointed a carryover Democrat Clerk as Acting Chief Clerk. Commissioner Richards appointed he friend, Alexander Schlegal as Chief Clerk and the battle began. Ernest asked Schlegal to resign, and the Commissioner asked Eagleson to resign if that was his position. The Commissioner won. Ernest married his former Clerk, Viola Scully in 1907.

Late in 1907, the Commissioner made a secret investigation of Eagleson, and President Teddy Roosevelt asked Eagleson to resign. He did, and Darwin Utter took over the office in March, 1908. During his time in Boise, Ern participated in various engineering projects: Twin Springs Placer Mining Company on the Upper Boise River; the New York Canal; Chief Engineer for the Boise City Carey Act for 150,000 acres South of the Boise River; and the first study of the Arrowrock Reservoir Project. Ern was elected Mayor of Boise in 1919 and was in office for eight years. He is the namesake of Eagleson Summit in the Boise National Forest.

**Edelblute,
William
Harvey**

1970-1954

USDMS

Mineral Surveys 1909

to

no more



ID PLS 72. Born in Kansas, William graduated from Kansas State College in 1892 and came West a year later. He taught school at Harrison, Farmington and Garfield, Washington and the at St. Maries, Idaho. At age 32 William married 16-year-old Emma Amanda Burns in 1902 at Rathdrum, Idaho, and they had five children.

William served many years as a consulting engineer to the Washington Water Power Company following the construction of the Post Falls Dam in about 1906. This was at a time easements were being obtained to allow for the higher water level. William was in ROTC in Kansas and enlisted in the Idaho National Guard when it was formed at Rathdrum. He opened an office in Rathdrum in 1909, noting that he was a U. S. Deputy Mineral Surveyor and that he had been County Surveyor for eight years. Before he went on Active duty, William served in the Idaho Legislature ending as the Chairman of the Ways and Means Committee.

William was the Commanding Officer of the Idaho Regiment at the Mexican Border in 1916 and was the Commanding Officer of the 146th Field Artillery and two other units in World War I in France, ending in rank as a Colonel. He was listed as a civil engineer in Rathdrum in 1910 and 1920, a poultry farmer in 1930, and a farmer in 1940. William died in Rathdrum in 1958.

Elder, Oren**Gibson**

1858-1932

Dr/Clerk

Clerk 1901

to

no more



Born in Maine, the son of a tailor, Oren was an apprentice to an engineer in Massachusetts in 1880. He married Josephine Ann Walker in 1894, and was a draftsman in the Surveyor General's Office in Boise by 1900. At that time he was required to pay \$15 to the Republican reelection campaign to keep his job, even under civil service. It appears that he worked in that capacity for the Surveyor General and succeeding transitions until at least 1930.

Oren was shown in the 1919 Directory as the Chief Draftsman. Oren and Josephine lived on a small farm outside of Boise.

Elder, Robert

1813-1872

Whig

Chief Clerk in 1851

Oregon Surveyor

General's Office

(10/15/1851

to

no more

Robert was born in Orwell, Kincross, Scotland, and immigrated to the U. S. with his parents and brothers in 1827. From 1837-1849 he was an assistant engineer under John Preston on the Michigan-Illinois Canal in Lockport, IL, before going to California to the mines at Marysville. Instead of mining, Robert surveyed townsites, "paper plats", in California. From there, he arranged to go to Oregon with John Preston to take a position as Clerk in the Surveyor General's Office. After arriving and while waiting for the position to open up, he surveyed on the plat of Oregon City until he started as Chief Clerk in 1851. In April 1852, he resigned to take his own contract.

Robert obtained a passport in 1858 (He had been naturalized in 1856.) to travel to Scotland and back. He was living with his brother, James, in Illinois in 1860 as a farmer. In 1870, both he and his brother John were living with James in Olmsted County, Minnesota. He was listed as a civil engineer. Robert died of TB in Cascade Township, Minnesota in 1872, and apparently never married. He was described as 5' 9" tall and having brown hair, a long oval face, high forehead, prominent nose, large mouth and an indented chin. Kimball Webster wrote that he was eccentric and kind. See OR GLO Surveyors for the maintained version of this information.

**Elliott, Holland
Rutledge**

1867-
USDS
Contract 273 (with 1906
Charles C.
Stevenson)
to
no more

ID PLS. Holland was born in Illinois, the son of a farmer. He married Emilene "Emma" VanDever Grantham in his home town in 1889. She must have been married before, because her surname at marriage was Grantham. A daughter was born in Alabama in 1890 and another daughter was born in Canyon County, Idaho in 1893. Holland's father died in Boise in 1898. Holland was living in both Boise and Cambridge in 1899, but by 1900, Emma was not around and the two daughters were living with an uncle and their paternal widowed grandmother in Middleton, Idaho. Holland was still in Cambridge, Idaho in 1904 where he was appointed a Notary Public. He was licensed as an Idaho PLS in Boise in 1904.

Holland was awarded a Joint Contract for five scattered townships generally West of Boise in 1906 with Charles C. Stevenson, and they both signed the oaths. Albinus Kimmell and Leonard Diehl were chainmen on the work, and they had a Joint Contract between themselves at the same time in the vicinity. Elliott was listed under Civil Engineers and Surveyors in the Boise City Directory in 1908, and as of now, no more is known after that.

**Elmer, William
Wells**

1872-1957
Rep
Mineral Surveys 1902
to
no more

Member AIME. Born in Walla Walla, Washington the son of a Canadian immigrant jeweler, Elmer was living with his family in Baker City, Oregon in 1880. He attended college for four years and showed up as a chainman for Thomas Babbit for 2 Claims in Owyhee County in 1897. He married Mary Eleanor Knapp in Silver City, Idaho in 1899. Mary died of causes associated with childbirth in 1900, but the baby girl survived. He was living in Boise in 1902. William married in 1903 in Portland to Clementine Catlin, the daughter of Judge John Catlin and the sister of Seth Catlin. She was a graduate of the Oregon Normal School and a member of Portland society in 1903, and they had three children, all born in Oregon. His daughter, Clemy, continued in the tradition of her mother in Portland.

William surveyed 41 Mining Claims out of Sumpter from 1904-1907, and by 1907, he was the general manager for the Hinds Consolidated Mining Company in Mexico, living there with his family. William returned to Oregon, and from 1914-1923 he surveyed 14 Mining Claims in Crook, Baker and Lane Counties and was listed as a consulting engineer in mining in Portland in 1916 and 1930. He was one of the founders of the Portland City Club in 1923, and in 1924 he was chairman of the Oregon Section of AIME and ran for the State Legislature. William returned to mineral surveying to survey one Claim near Applegate in 1953 at age 81, verified by signature.

**Erskine,
Frederick
Henry "Fred"**

1870-1949

Dem

USDMS

Mineral Surveys 1908

to

no more

Born in Iowa, Fred graduated from the 8th grade and married Emmaline Marie Jordan in Iowa in 1893. His father eventually worked for the Treasury Department in Washington D. C. Fred was a Farmer in Iowa in 1900 and came to Grangeville, Idaho in 1903 to be the draftsman for W. C. McNutt. He was soon surveying property on his own and was listed a civil engineer in Grangeville in 1910 with a wife and three children. From at least 1906-08, he was in a partnership with County Surveyor E. Clifford Spedden in Grangeville. He surveyed Mineral Survey 2240 in Clearwater County in 1909 and Mineral 2574 in Idaho County in 1910.

Fred surveyed ten more Mineral Surveys in Idaho County from 1911-18 and returned at age 70 after more than 20 years to survey three more Mineral Surveys in Idaho County from 1940-43. Fred was a surveyor and civil engineer in Grangeville in 1910 and 1920, and transitioned his residence and business office to Lewiston in about 1921. Fred and his son both joined the Army because of the war threat in 1916 for an unknown period. He ran a Democrat for Nez Perce County Surveyor in 1922, without success, and was appointed a County Deputy Sheriff in 1924. Probably because of that appointment, he became an expert on finger prints. Fred published a detailed map of Idaho County in 1923. Emma died in 1834, his son Neil in 1937 and Fred died in Clearwater County, Idaho in 1949 with burial in Lewiston.

Everett, Ennie
P.
 1862-1924
 USDMS
 Special Instructions 1899

to
 no more

Born in Michigan, Ennie attended the Michigan State University in Mining Engineering from 1883-85 and 1899-1901. Ennie married Margaret E. "Maggie" Teller in Michigan in 1887. He was bonded as a USDMS under Bond 157 on 4/10/1899 in Idaho and lived in Cripple Creek, Colorado at that time. He died in Mohave County, Arizona in 1924 and was a mining engineer and lawyer at the time, having passed the bar in Arizona in 1921 at age 60 after a long period of self-study. Ennie made it in time to practice law with his daughter in Arizona as Everett and Everett.

Abbreviations

Abbreviation	Name
USDS =	United States Deputy Surveyor
USDMS =	United States Deputy Mineral Surveyor
USS =	United States Surveyor (Employee of another agency)
Astr =	Astronomer
IAA =	Indian Allotting Agent (Employee of Office of Indian Affairs)
Comp =	Compassman
SES =	Special Examiner of Surveys (Hired by the Commissioner)
EX =	Examiner of Surveys (Hired by the Surveyor General)
S G =	Surveyor General
Ch Clerk =	Chief Clerk in Surveyor General's Office
Dr/Clerk =	Draftsman/ Clerk in Surveyor General's Office

Rep	Republican
Dem	Democrat
Whig	Whig
Peoples	Peoples
Union	Union
Ind	Independent
Prohib	Prohibition
Free Soil	Free Soil
Fusion	Fusion
Greenback	Greenback
Populist	Populist
Socialist	Socialist