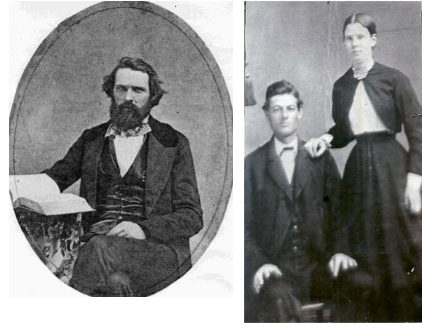


Biographies S - Z

of All of the Surveyors and Individuals Associated with the Surveyor General's Office in Montana 1867-1910



copyright 2024 by Jerry Olson

7/7/2024

Typical Format		Short Biography
<i>Born-Died</i>	Photo (if available with permission to post)	(biography) means that there is a biography of some kind available in the Collected Biography Section.
Political Affiliation, if known	Credits and sources for photos can be found in the Photo Section.	See the end of this section for a list of abbreviations.
Type of Surveyor		
First Contract or Engagement to	Year	
Last Contract or Engagement	Year	

Smith, Andrew J. Born in New York
1838-1903
 S G
 Surveyor General 1873
 to
 no more

Typical Format

Photo

Short Biography

Twining, William Johnson

1839-1882

Astr

USS

to

no more

1872



William was born in Illinois, the son of a Professor of mathematics and astronomy at Wabash. He attended Yale University and had to quit because of illness. William was appointed to West Point, graduated there in Engineering in 1863 as fourth in his class, and was immediately sent to fight in the Civil War. He served in the Engineering Corps at Chickamanga and Chattanooga and was Chief Engineer at the battles of Nashville and Columbia. being cited for gallantry

William was appointed one of the first City Commissioners of Washington, D. C. from the ranks of the Corps of Engineers, as required by law. He set forth on a program of sewage, streets, water, and the reclamation of the malaria flats on the Potomac. In the Spring of 1882, William caught a cold and it got worse. He refused to go home and rest, and after it turned into pneumonia, he died the third day. He left a lady about to become his first wife.

Ward, Arthur Clithero

1841-1928

Astr

Special Instructions

to

no more

1872



Born in England, the son of a Lt. General in the Royal Engineers,

Typical Format

Photo

Short Biography

**Washburn, Henry
Dana**

1832-1871

Rep

S G

Surveyor General 1869

to

no more



First Surveyor General of
Montana

Wilson, Orrin S.

Born in Michigan, graduated from the University of Michigan.
Had worked for the Great Lakes geodetic survey

Astr

Special Instructions 1872

to

no more

Typical Format

Photo

Short Biography

Abbreviations

Abbreviation	Name
USDS =	United States Deputy Surveyor
USDMS =	United States Deputy Mineral Surveyor
USS =	United States Surveyor (Employee of another agency)
Astr =	Astronomer
IAA =	Indian Allotting Agent (Employee of Office of Indian Affairs)
Comp =	Compassman
SES =	Special Examiner of Surveys (Hired by the Commissioner)
EX =	Examiner of Surveys (Hired by the Surveyor General)
S G =	Surveyor General
Ch Clerk =	Chief Clerk in Surveyor General's Office
Dr/Clerk =	Draftsman / Clerk in Surveyor General's Office

Rep	Republican
Dem	Democrat
Whig	Whig
Peoples	Peoples
Union	Union
Ind	Independent
Prohib	Prohibition
Free Soil	Free Soil
Fusion	Fusion
Greenback	Greenback
Populist	Populist
Socialist	Socialist